



# stitchncraft beads

quality beads, sparkling service

## WORKSHOP PROGRAMME

### January – December 2010



Shop and mail order:  
01747 830666



Opening hours  
9.30am – 5pm  
Monday to Saturday

(Answer phone  
available at other  
times)

The Studio, 2 Chaldicott Barns, Tokes Lane, Semley, Nr Shaftesbury, SP7 9AW

[www.stitchncraft.co.uk](http://www.stitchncraft.co.uk)

[www.westofenglandevents.co.uk](http://www.westofenglandevents.co.uk)

# Workshop Calendar

## JANUARY

### In the Studio this month...

Exhibition of Chain Maille by  
*Gary Taylor*

#### Saturday 9th

Floribunda –  
*Heather Kingsley-Heath*

#### Wednesday 13th

Double Scallop Bracelet -  
*Pam Palmer*

#### Saturday 16th

Wrapped & Beaded Donuts -  
*Alison Nash*

#### Saturday 23rd

Full Persian Chain Maille -  
*Gary Taylor*

#### Thursday 28th

Wraps & Ribbons - *Sam Compton*

#### Saturday 30th

Nefertiti Necklace -  
*Elizabeth Selwood*

## FEBRUARY

### In the Studio this month...

Exhibition from Albion Stitch Book  
Two by *Heather Kingsley-Heath*

#### Saturday 6th

RAW Interwoven - *Gillian Lamb*

#### Wednesday 10th

Learn to Bead Netting -  
*Elizabeth Selwood*

#### Saturday 13th

Brilliant Bezels -  
*Heather Kingsley-Heath*

#### Saturday 20th

Textured Beaded Bead - *Lynn Davy*

#### Tuesday 23rd

St Petersburg Chains - *Lynn Firth*

#### Thursday 25th

Felt & Beaded Bag Charms -  
*Mary Phillips*

#### Friday 26th

Herringbone Ice - *Annette Bolton*

## MARCH

### In the Studio this month...

Exhibition of beadwork from  
*Dragon Beaders*

#### Saturday 6th

Peyote Ruffles - *Pam Palmer*

#### Wednesday 10th

Learn to Bead Spiral Ladders -  
*Elizabeth Selwood*

#### Saturday 13th

Wisteria Lariat - *Sylvia Fairhurst*

#### Friday 19th

Fabulous Fibulas -  
*Heather Kingsley-Heath*

## Saturday 20th

Wire Links & Wraps - *Sam Compton*

## Tuesday 23rd

Falling Leaves - *Elizabeth Selwood*

## Saturday 27th

Ritz - *Sallyann Dunn*

## APRIL

### In the Studio this month...

Exhibition of reproduction prints  
from *Barrie Pictures*

#### Saturday 3rd

Byzantine Chain Maille -  
*Gary Taylor*

#### Saturday 10th

Wrapped & Woven Tassels -  
*Lynn Firth*

#### Wednesday 14th

Learn to Bead Peyote -  
*Elizabeth Selwood*

#### Thursday 15th

Spring Trellis Collar - *Lynn Davy*

#### Friday 23rd

Layered Pendant - *Annette Bolton*

#### Saturday 24th

Beginners Tiara Making -  
*Sam Compton*

#### Wednesday 28th

Scintillating Spheres -  
*Melanie de Miguel*

## MAY

### In the Studio this month...

Fabulous Felt by *Mary Phillips*

#### Thursday 6th

More Tiara Making - *Sam Compton*

#### Saturday 8th

Felt Cases - *Mary Phillips*

#### Wednesday 12th

Learn to Bead Dutch Spiral -  
*Elizabeth Selwood*

#### Saturday 15th

Beaded Crochet - *Gillian Lamb*

#### Tuesday 18th

Briony Necklace - *Pam Palmer*

#### Friday 21st

Crystals & Swags - *Elizabeth Selwood*

#### Saturday 22nd

Celini Spiral - *Jane Matthews*

#### Wednesday 26th

Double Rope Twist - *Jane Matthews*

#### Saturday 29th

Crystal Box Chain - *Lynn Firth*

## JUNE

### In the Studio this month...

Exhibition of embroidery &  
beadwork by *Trisha Forshaw*

## Friday 4th

Crystal Latticework & Treasures -  
*Melanie de Miguel*

## Thursday 10th

Bead Embroidered Collars -  
*Alison Nash*

## Thursday 17th

Pearl & Crystal Pillows - *Lynn Firth*

## Saturday 19th

Medieval Bracelet - *Annette Bolton*

## Wednesday 23rd

Knitted Beaded Cuff - *Lynn Firth*

## Friday 25th & Saturday 26th

Masterclass -

*Heather Kingsley-Heath*

## JULY

### In the Studio this month...

Exhibition of knitted wirework by  
*Rachel Reilly*

#### Saturday 3rd

Wirework Necklace & Earrings -  
*Sam Compton*

#### Thursday 8th

Cornflower & Lace -  
*Elizabeth Selwood*

#### Saturday 10th

Russian Bloom - *Lynn Firth*

#### Wednesday 14th

Learn to Bead Tubular Herringbone -  
*Elizabeth Selwood*

#### Friday 16th

Brooch & Embellishment -  
*Mary Phillips*

#### Saturday 17th

Encrusted Pearls - *Sallyann Dunn*

#### Thursday 22nd & Friday 23rd

Masterclass - *Annette Bolton*

#### Saturday 24th

Herringbone Torc - *Pam Palmer*

#### Saturday 31st

Japanese Lace Chain Maille -  
*Gary Taylor*

## AUGUST

### In the Studio this month...

Beaded Bead of the Month  
Competition & CRYSTALLIZED™.

Swarovski Elements

#### Wednesday 4th

Cinnamon Sparkles - *Sallyann Dunn*

#### Saturday 7th

Flower Necklace - *Gillian Lamb*

#### Wednesday 11th

Freeform Designer Bag - *Julia Hall*

#### Saturday 14th

Oyster Bay - *Heather Kingsley-Heath*

#### Saturday 21st

Encapsulated Beads - *Gary Taylor*

## Workshop Calendar

### Saturday 28th

Angles for Dangles - Lynn Firth

### SEPTEMBER

#### In the Studio this month...

Exhibition of beadwork from US Bead Artist *Laura McCabe*

#### Wednesday 1st & Thursday 2nd

Jewel of the Nile - *Sylvia Fairhurst*

#### Wednesday 8th

Learn to Bead Flat Herringbone - *Elizabeth Selwood*

#### Saturday 11th

Pierrot Necklace & Earrings - *Elizabeth Selwood*

#### Tuesday 14th

More Links & Wraps - *Sam Compton*

#### Friday 17th

Caterpillar Bangles - *Annette Bolton*

#### Saturday 18th

Gemchip Collar - *Lynn Davy*

#### Monday 20th

Nicolette Bracelet - *Heather Lalthwaite*

#### Thursday 23rd

Elizabeth Crystal Necklace - *Heather Lalthwaite*

#### Saturday 25th

Treasured Talismans - *Heather Kingsley-Heath*

#### Tuesday 28th & Wednesday 29th

Masterclass - *Laura McCabe*

#### Thursday 30th

Les Bijoux d'Eiffel - *Laura McCabe*

### OCTOBER

#### In the Studio this month...

Exhibition of Cloth Art Dolls by *Alison Nash*

### Saturday 2nd

Georgian Jewels - *Laura McCabe*

### Sunday 3rd

Les Bijoux d'Eiffel - *Laura McCabe*

### Wednesday 6th

Felted Evening Bag - *Mary Phillips*

### Saturday 9th

Kingsmille Chain Maille - *Gary Taylor*

### Wednesday 13th

Learn to Bead Square Stitch - *Elizabeth Selwood*

### Saturday 16th

Hannah Cuff - *Pam Palmer*

### Monday 18th

Woven Clutch Bag - *Jane Matthews*

### Saturday 23rd

Crystal Flower Bracelet - *Jane Matthews*

### Tuesday 26th

Advanced Beaded Baubles - *Lynn Firth*

### Thursday 28th

Triangle Pendant - *Sallyann Dunn*

### Saturday 30th

Beginners Beaded Bauble - *Lynn Firth*

### NOVEMBER

#### In the Studio this month...

Janet McCallum and her colourful quilts.

### Thursday 4th

Beginners Beaded Bauble - *Lynn Firth*

### Saturday 6th

Tudor Windows - *Gillian Lamb*

### Tuesday 9th

Cabocons & Rings - *Elizabeth Selwood*

### Wednesday 10th

Learn to Bead Brick Stitch - *Elizabeth Selwood*

### Thursday 11th

Advanced Beaded Baubles - *Lynn Firth*

### Saturday 13th

Beady Bookmarks - *Lynn Firth*

### Thursday 18th

Carnival Flowers - *Annette Bolton*

### Saturday 20th

Christmas Tree Decorations - *Sam Compton*

### Saturday 27th

Wire Wrapped Dangles - *Lynn Davy*

### DECEMBER

#### In the Studio this month...

Exhibition of beadwork from our very own *Batty Beaders*

### Saturday 4th

Advanced Beaded Baubles - *Lynn Firth*

### Wednesday 8th

Learn to Bead Right Angle Weave - *Elizabeth Selwood*

### Saturday 11th

Encapsulated Pendants - *Gary Taylor*

*Don't forget we will have 'Taster Sessions' on throughout the year. Keep an eye on our web site and in the Studio for more information. Sign up for our newsletter so you won't be disappointed!*

Month	Batty Beaders 10am - 12.30pm	Knitting Club 2.30pm - 4.30pm
January	25th	5th & 19th
February	22nd	2nd & 16th
March	29th	2nd, 16th & 30th
April	26th	13th & 27th
May	24th	11th & 25th
June	28th	8th & 22nd
July	26th	6th & 20th
August	23rd	3rd, 17th & 31st
September	27th	7th & 21st
October	25th	5th & 19th
November	29th	2nd, 16th & 30th
December	6th	14th

To book a place telephone 01747 830666 or online at [www.stitchncraft.co.uk](http://www.stitchncraft.co.uk)

## Workshop Booking Information

### Workshop Fees

All full day adult classes run from 10.00am – 4.00pm (unless otherwise stated) and cost £30.00 per person excluding materials (unless otherwise stated). Tea and coffee will be provided and you are welcome to bring a packed lunch or order lunch from the Farmhouse for £5.00. An order form for food will be sent with your requirements list approximately 4 weeks prior to the workshop date.

### Cancellation

We reserve the right to cancel a workshop up to two weeks prior to the event if there are insufficient numbers. Should the workshop have to be cancelled we will refund your fee in full. We regret that refunds cannot be given in any other circumstances and course fees or deposits are not transferable.

### Bookings

You may reserve your place by telephone, e-mail, fax, or in person and a 50% deposit will secure your booking. The balance of the fee will be required 4 weeks prior to the workshop when a requirements list and reminder will be sent to you. We reserve the right to cancel a booking, without the deposit being refunded, should the final amount not be paid as requested.

## Accommodation

If you are visiting our Studio and would like to stay in local Bed & Breakfast accommodation within easy reach here are a few contact details you may find useful. Please mention Stitchncraft Beads when making your enquiry or booking.

### The Chalet

Christys Lane  
Shaftesbury  
Dorset



Tel: 01747 853945  
Email: [enquiries@thechalet.biz](mailto:enquiries@thechalet.biz)  
<http://www.thechalet.biz>

### The Retreat

47 Bell Street  
Shaftesbury,  
Dorset  
SP7 8AE



Tel: 01747 850372  
Email: [enquiries@the-retreat.co.uk](mailto:enquiries@the-retreat.co.uk)  
<http://www.the-retreat.co.uk>

### Holbrook Bed & Breakfast

6 Ivy Cross  
Shaftesbury  
Dorset  
SP7 8DW



Tel: 01747 858522  
<http://www.holbrookbandb.co.uk>

### Whitebridge Farm

Semley  
Shaftesbury  
Dorset  
SP7 9JT



Tel: 01747 830462  
Email: [whitebridgefarm@btconnect.com](mailto:whitebridgefarm@btconnect.com)  
<http://www.whitebridgeholidaycottages.co.uk>

January 2010

### **In the Studio for January ....**

We have an exciting exhibition of unique Chain Maille jewellery designs from Gary Taylor. Much of his unique work incorporates beautiful sparkly CRYSTALLIZED™- Swarovski Elements. Come along and see Gary's latest pieces of work and why not book onto one of his workshops to try this technique for yourself?



Saturday 9th January

### **Floribunda - Heather Kingsley-Heath**

Of Heather's 'realistic' beaded sculptures the floral vine tassel is the most popular, in this workshop discover her simple art of beaded flowers. We'll create leaves, petals, buds and flowers and build a garland necklace (time permitting!) You'll be working in a variety of beadwork stitches and seed beads.



**Not suitable for beginners**

Wednesday 13th January

### **Double Scallop Bracelet - Pam Palmer**

The combination of different bead types and sizes produce this beautifully textured cuff that is a delight to wear. The use of fire polished beads means that it can hold its own in any sophisticated event, while not being too full of 'bling' to be worn during the day.



**A working knowledge of basic Peyote stitch is essential.**

Saturday 16th January

### **Wrapped & Beaded Donuts - Alison Nash**

Have fun creating these lovely wrapped 'donut' shapes which are then decorated with beads. They can be made into decorative buttons, necklaces, bracelets and much more.



**Suitable for all abilities**

Saturday 23rd January

### Full Persian Chain - Gary Taylor

£35

Learn how to create jewellery using this lovely Chain Maille technique. Gary will show you how to link individual jump rings together that form geometric patterns. Great for necklaces, bracelets & earrings.



**Tools supplied for use on the day and all materials included in the price. Suitable for all.**

Thursday 28th January

### Wraps & Ribbons - Sam Compton

Let Sam show you how to create this feminine necklace using stringing and knotting techniques. These techniques can then be used to create bracelets, necklaces and much more.



**Suitable for complete beginners.**

Saturday 30th January

### Nefertiti Necklace - Elizabeth Selwood

Use an interesting combination of stitches and beads to create a necklace reminiscent of Egyptian jewellery. Select your own colours to create a unique necklace. Because of the variety of stitches included in the day, some beading experience is necessary, but for inexperienced beaders this would be an excellent way to learn about the range of beads available.



**Some beading experience essential**

February

### In the Studio for February ...

Come and be inspired by this lovely exhibition from Heather Kingsley-Heath's brand new Albion Stitch Book Two. If you enjoyed book one, you'll love the designs she has created for book two. Easy to work, her new designs include brilliant bezels, crystal encrusted creatures, sculptural and three dimensional forms, plus her trademark infinitely wearable necklaces and bracelets. Many items on display for the first time.

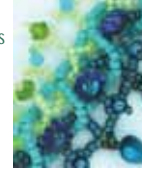


Saturday 6th February

### **RAW Interweave - Gillian Lamb**

Make a bracelet or lariat interweaving Right Angle Weave circles together. Have fun mixing and matching your colours and decorate with crystals, pressed flowers, dangles, in fact anything you like to make a one of a kind bracelet or lariat.

**Suitable for all levels**



Wednesday 10th February

10.00am - 12.30pm

### **Learn to Bead Netting - Elizabeth Selwood**

**£15.00**

This 9-session programme will introduce students to the most popular beading techniques and the materials & equipment used. Each session will include a worksheet on how to use the technique to produce a necklace, bracelet or earrings.

Book and pay for all 9 sessions to receive a 10% discount on the total course fee.

**No experience necessary**



Saturday 13th February

### **Brilliant Bezels - Heather Kingsley-Heath**

A workshop to discover just how versatile Albion Stitch can be and to celebrate the publication of Book Two! Learn how to create simple bezels, shaped bezels, bezels with one or more corners. This class will also cover adding bails to the bezels for pendants or ring shanks.

**Suitable for all levels**



Saturday 20th February

### **Textured Beaded Bead - Lynn Davy**

Use circular peyote stitch with seeds, cylinder, triangle and drop beads to create a set of beaded beads with a tactile surface. You can then string them into a stylish necklace.

**Experience of peyote stitch including increasing and decreasing essential**



Tuesday 23rd February

### St Petersburg Chain - Lynn Firth

Learn this lovely stitch that can be used to create wonderful necklaces, bracelets and lariats. Decorate with Swarovski crystals, drops or add surface embellishment to create a stunning necklace.



**Suitable for all levels including beginners**

Thursday 25th February

### Felt & Beaded Bag Charm - Mary Phillips

£35.00

With beautifully dyed merino wools create a bag charm with felted beads and chords. Take your ideas further and be inspired to embellish with beads and crystals.



**Suitable for all levels of felting and beading including complete beginners. Workshop fee inclusive of wools and soap.**

Friday 26th February

### Herringbone Ice - Annette Bolton

Experiment with Herringbone Stitch using a selection of different size beads including crystals and pearls. Work it all in whites and creams to give a fresh icy look or work in a colour of your choice. Add texture by incorporating beaded spikes and long crystals and a beaded loop crystal fastener!



**Suitable for all levels including beginners**

March 2010

### In the Studio for March...

Come and feast your eyes on the fantastic exhibition of beadwork by the Dragon beaders of Surrey.

They work hard together on various challenges to present an exciting display for the London Bead show at Kempton Park race course twice a year and now you have the chance to see it here in the Studio.



Saturday 6th March

### **Peyote Ruffles Bracelet - Pam Palmer**

The bracelet is made using a multidrop Peyote stitch band as the base. This is then embellished with Peyote ruffles and crystals. Once you have learnt how to make the ruffled elements, you will be able to go on to use them in necklaces as pendants or as earrings.



**Some working knowledge of peyote stitch is essential**

Wednesday 10th March

10.00am - 12.30pm

### **Learn to Bead Spiral Ladders - Elizabeth Selwood**

**£15.00**

**Session 2.** This 9-session programme will introduce students to the most popular beading techniques and the materials & equipment used. Each session will include a worksheet on how to use the technique to produce a necklace, bracelet or earrings. Book and pay for all 9 sessions to receive a 10% discount on the total course fee.



**No experience necessary**

Saturday 13th March

### **Wisteria Lariat - Sylvia Fairhurst**

The workshop focuses on various techniques for the different components. Five crystal flower racemes adorned with a few leaves are attached to each end of the lariat for a sumptuous result.



**No previous experience is necessary but knowledge of Right Angle Weave, Brick Stitch and Spiral Rope would be an advantage.**

Friday 19th March

### **Fabulous Fibulas - Heather Kingsley-Heath**

Discover how to create stunning fibula pins, with wirework bases and gorgeous beaded beads. There will be lots of options to explore on this workshop to create a truly personal piece with four brand new beaded bead design to try.



**Suitable for beginners/intermediate bead makers**

Saturday 20th March

### Wraps & Ribbons - Sam Compton

Use ribbon, wire, crystals and pearls to make this beautiful necklace, bracelet and earrings set. You will learn how to use wire to make droplets and make a chain to link beads and crystals together.

**Suitable for all levels**



Tuesday 23rd March

### Falling Leaves - Elizabeth Selwood

This design uses Rivoli crystals in combination with a range of seed beads and delicas to create leaves and flowers that tumble down from a long spiral rope to create a pretty and unusual adjustable necklace. The design uses four different stitches.

**Not suitable for beginners**

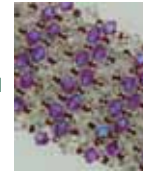


Saturday 27th March

### Ritzzy - Sallyann Dunn

This is a fairly simple cuff, but so many lovely CRYSTALLIZED™-Swarovski Elements bicones! The technique is netting which produces a soft and supple bead fabric that looks just wonderful with the glitzy glint of crystals!

**Suitable for all levels**



April 2010

### In the Studio for April...

This month sees an exhibition from Barrie Pictures.

These lovely reproduction of Victorian and Edwardian prints of the towns and villages of Somerset, Dorset and Wiltshire. Available to order mounted or framed.



Saturday 3rd April

### Byzantine Chain Maille - Gary Taylor

£35.00

A beautiful Chain Maille weave and the 'work horse' of the Chain Maille world with endless possibilities. Let Gary show you how to create bracelets and necklaces using this popular technique. No experience necessary, cost of workshop includes jump rings and use of tools on the day.



**Suitable for all levels.**

Saturday 10th April

### Wrapped & Woven Tassels - Lynn Firth

Create these stunning tactile tassels using simple threading and weaving techniques. Decorate with accent beads, charms, crystals, stone chips and much more. Make them for bag charms, key fobs or simply just to hang on door handles and kitchen cupboards.



**Suitable for all, no experience necessary.**

Wednesday 14th April

10.00am - 12.30pm

### Learn to Bead Peyote - Elizabeth Selwood

£15.00

**Session 3.** This 9-session programme will introduce students to the most popular beading techniques and the materials & equipment used. Each session will include a worksheet on how to use the technique to produce a necklace, bracelet or earrings. Book and pay for all 9 sessions to receive a 10% discount on the total course fee.



**No experience necessary**

Thursday 15th April

### Spring Trellis Collar - Lynn Davy

A foundation of right angle weave is lavishly embellished with fringing, shell buttons and accent beads to make this comfortable collar. Learn to experiment with random bead mixes and how to increase the weave to make the collar curve, then have fun choosing how to decorate it!



**An understanding of single-needle right angle weave would be very helpful.**

To book a place telephone 01747 830666 or online at [www.stitchncraft.co.uk](http://www.stitchncraft.co.uk)

Friday 23rd April

### Layered Pendant - Annette Bolton

This pendant consists of three layers of beading using size 11 beads crystals and pearls. There is an interesting play of colour when the layers are put together. It could also be made into a small holder for storing pins by working four layers of beading.



**Suitable for all levels**

Saturday 24th April

### Beginners Tiara Making - Sam Compton

Create this pretty but simple tiara using wire, beads and crystals. You will learn how to use wire and crystals to form simple flower motifs and organic forms.



**Suitable for all levels**

Wednesday 28th April

### Scintillating Spheres - Melanie de Miguel

The smallest spherical structure comprises 60 atoms and it wasn't difficult for Mel to translate to beads, but making it in crystals was a different matter. She modified those which produced a prettier latticework and set to work with embellishment.



**Not suitable for beginners. Knowledge of RAW essential**

May 2010

### In the Studio for May...

Fabulous felt from Mary Phillips.

Mary teaches various felting techniques at the Studio here and combines her felting talents with beads and other various techniques. Come and see what Mary has been up to and maybe book on one of her workshops and try something new!



Thursday 6th May

### More Tiara Making - Sam Compton

Create a pretty tiara using beads, wire, crystals and pearls. You will learn how to form a variation of motifs, including flowers, spirals, dragonflies and organic forms. You will then be encouraged to experiment and form your own design using your new skills.



Suitable for all levels

Saturday 8th May

### Sunglasses or Spectacle Case - Mary Phillips

£35.00

Be inspired to create a personalised sunglasses or spectacle case from beautifully dyed merino wool. We will also cover ways to take your ideas further with embellishment ideas in both merino felting and beading. Cost of this workshop includes felting materials.



Suitable for all levels of felting and beading

Wednesday 12th May

10.00am - 12.30pm

### Learn to Bead Dutch Spiral - Elizabeth Selwood

£15.00

**Session 4.** This 9-session programme will introduce students to the most popular beading techniques and the materials & equipment used. Each session will include a worksheet on how to use the technique to produce a necklace, bracelet or earrings.

Book and pay for all 9 sessions to receive a 10% discount on the total course fee.

**No experience necessary**



Saturday 15th May

### Beaded Crochet - Gillian Lamb

No knowledge of crochet is an advantage! Come and learn this exciting technique & make a beady crochet bangle or experiment with different beads and/or crystals. (for those who really can't get the hang of the technique - then there may well be a surprise beady project after lunch.)

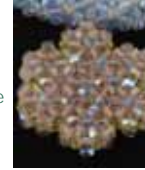


Suitable for all levels or experience

Tuesday 18th May

### Briony Necklace - Pam Palmer

This stunning, softly draping rope is made using one of the more unusual stitches - tubular Triangle Weave. It is further enhanced with a beaded floral pendant. A reasonable amount of beading experience is needed for this project although no prior knowledge of Triangle Weave is necessary, so why not come along and learn what is likely to be a new stitch for most people.



**Not suitable for beginners**

Friday 21st May

### Crystals & Swags - Elizabeth Selwood

Make this dainty and extremely feminine necklace and earrings in a combination of Swarovski crystals, pearls or faceted beads and seed beads. It works well as a choker or as a longer necklace and, depending upon your choice of beads, with casual clothes or with a formal cocktail or evening dress.



**This workshop is suitable for all abilities including beginner**

Saturday 22nd May

### Celini Spiral - Jane Matthews

Learn how to make these lovely twisted spirals. Patterns and texture can be changed by varying beads and embellishment. Great for necklaces, bracelets, bag straps and more.



**Suitable for all levels including beginners.**

Wednesday 26th May

### Double Rope Twist - Jane Matthews

This lovely feminine necklace is made using bead needleweaving techniques to create a double rope twist which can then be lavishly embellished in your favourite colours and accent beads. Why not make a different one for every season!



**Suitable for all levels including beginners.**

Saturday 29th May

### Crystal Box Chain - Lynn Firth

If you have never tried Right Angle Weave before now is the time! Learn this wonderfully fluid stitch whilst creating a spectacular crystal bracelet using CRYSTALLIZED™- Swarovski Elements that will make you feel a million dollars!

**Suitable for all. No knowledge of Right Angle Weave necessary.**



June 2010

### In the Studio for June...

Trisha Forshaw will be exhibiting her 'Beads and Bobs' an assortment of her creative beadwork, some of which was designed for her City & Guilds course, plus other creative pieces from her embroidery designs. Trisha has always been interested in embroidery and textiles, from making items for the home to dress making.



Friday 4th June

### Crystal Latticework & Treasures - Melanie de Miguel

Rather than just use these lovely squares as dangles, merely attaching them using their central hole, Mel decided to approach them from a different direction - from the inside out! For the latticework method the squares are trapped in a delicate network and the treasures are trapped by woven structures at each corner.

**Not suitable for beginners.**



Thursday 10th June

### Bead Embroidered Collars - Alison Nash

These wonderful collars are created by using beads and simple embroidery techniques which can be adapted to decorate bags, clothing and lots more. Let your imagination run wild as you have fun with colour, texture and shape.

**Suitable for all. No beading experience necessary.**



Thursday 17th June

### Pearl & Crystal Pillows - Lynn Firth

Have fun with these lovely CRYSTALLIZED™- Swarovski Elements Crystal & Pearl pillows which can be made into necklaces, linked together to form bracelets or worn as brooches. Add surface embellishment, tassels and dangles to create your very own delicate pillow. A working knowledge of Right Angle Weave is desirable.



**Not suitable for beginners.**

Saturday 19th June

### Medieval Bracelet - Annette Bolton

A lovely bracelet or even a necklace worked in various bead sizes including 15's, 8's, drops and crystals. It gives the impression of highly decorative beads along a delicate cord



**Suitable for all levels including beginners.**

Wednesday 23rd June

2.00pm - 4.00pm

### Knitted Beaded Cuff - Lynn Firth

£15.00

Have fun with this quick and easy knitted cuff using wire, basic knitting skills and beads. Find out how to make an individual piece of wearable wirework that you can add different beads to. Use two colours of wire for an interesting two tone effect. Class fee includes a bracelet cuff.



**Suitable for those with basic knitting skills.**

Friday 25th & Saturday 26th June

### Masterclass - Heather Kingsley-Heath

£60.00

A two day master class for beadwork and textile enthusiasts longing to get experimental with this media. The workshop will cover: exploring form and shape, making bases, armatures and secure foundations, surface embellishment techniques, extending the boundaries, adding beaded extensions.

**There will be a preparation list 6 weeks prior to the workshop. Students will be familiar with a range of beadwork stitches and have basic sewing skills, they will also be comfortable with the concept of exploring their own creativity in a group environment.**



July 2010

### In the Studio for July...

Rachel Reilly and her fantastic wirework. Rachel knits fine coloured copper wires to produce wearable jewels. Each piece is always unique and non repeatable. Come along this month and see a collection of her colourful and innovative work.



Saturday 3rd July

### Wirework Necklace & Earrings - Sam Compton

Create this beautiful necklace and earrings set by using wire, crystals, bugle and seed beads. You will learn how to make intricate flower and leaf motifs and manipulate, twist and tweak the wire into organic forms.

**Suitable for all levels.**



Thursday 8th July

### Cornflower & Lace - Elizabeth Selwood

Make this supremely feminine easy to wear necklace which combines a Rivoli crystal with seed beads and delicas. To complete the necklace, the workshop will include use of three different beadwork stitches and also a technique to enclose a Rivoli which requires a strong tension.

**Not suitable for beginners.**



Saturday 10th July

### Russian Bloom - Lynn Firth

Make these delicate flowers and leaves and attach to a beaded rope for a tactile and delicate lariat. Add sparkle with some CRYSTALLIZED™- Swarovski Elements if you wish. This beautiful design can also be made into a bracelet or brooch.

**Not suitable for beginners.**



Wednesday 14th July

10.00am - 12.30pm

### Learn to Bead Tubular Herringbone-Elizabeth Selwood

£15.00

**Session 5.** This 9-session programme will introduce students to the most popular beading techniques & the materials and equipment used. Each session will include a worksheet on how to use the technique to produce a necklace, bracelet or earrings.

Book and pay for all 9 sessions to receive a 10% discount on the total course fee.

**No experience necessary**

Friday 16th July

### Brooch or Embellishment - Mary Phillips

£35.00

Learn how to make embellishments, perhaps for your purse or any other bags you may have, with complementary cords, beads and baubles. Take this even further with the extra luxury of glass beads and crystals. In this workshop you will learn how to make your own jewellery, belts etc.

**Suitable for experienced felters and beginners.**

Saturday 17th July

### Encrusted Pearls - Sallyann Dunn

Pearls in a right angle weave for the base for this classy encrusted bracelet. Embellished with size 15 seed beads and 3mm CRYSTALLIZED™- Swarovski Elements bicones. Some experience of right angle weave would be good but not essential.

**Not suitable for beginners.**

Thursday 22nd & Friday 23rd July

### Masterclass Indian Summer - Annette Bolton

£60.00

Geometric beaded shapes are worked in hot Indian colours, together with embellished beaded beads that make a stunning combination for wearable jewellery. The felted beads will be made in several ways and can be highly embellished to complement the beaded shapes in the necklace.

**Not suitable for beginners to beadwork.**



Saturday 24th July

### Herringbone Torc - Pam Palmer

This delightful choker style decorated rope is made using tubular Herringbone Weave. It is embellished with decorative beadwork made using several other Herringbone techniques. You do not need any prior knowledge of this stitch in order to make the torc.



**Some beading experience required.**

Saturday 31st July

### Japanese Lace Chain Maille - Gary Taylor

£35.00

A touch of the orient with this intricate weave. Create a sophisticated look with the Chain Maille Technique. All tools will be available for use on the day and the course fee includes jump rings on the day.



**Suitable for all, no experience necessary.**

August 2010

### In the Studio for August....

Come and join our Birthday celebrations this month! We will have on display the Beaded Beads from our first competition 'Beaded Bead of the Month' where competitors produced a new beaded bead each month incorporating six crystals! We will also have on show pieces of work on loan from CRYSTALLIZED™- Swarovski Elements plus the launch of our new beading competition.



Wednesday 4th August

### Cinnamon Sparkles - Sallyann Dunn

This pendant is made by bezelling a CRYSTALLIZED™- Swarovski Elements Rivoli (the larger the better). The bezelling will be larger than normal to allow for embellishment in netting. You will be using peyote and netting techniques and this is not suitable for beginners.



**A working knowledge of Peyote is required.**

To book a place telephone 01747 830666 or online at [www.stitchncraft.co.uk](http://www.stitchncraft.co.uk)

Saturday 7th August

### Flower Necklace - Gillian Lamb

Make a stunning necklace, add a bracelet and earrings at home when you have time using the familiar technique of "Chevron Chain" BUT with a plus. You can experiment with colours throughout this piece to get a really unique and interesting effect.



**Suitable for all abilities.**

Wednesday 11th August

### Freeform Designer Bag - Julia Hall

Learn the techniques to create this stunning knitted and crocheted bag that you will not find in the high street shops. Use hand dyed Noro knitting yarn with basic stitch techniques to create a truly 'one of a kind' designs.



**You will need basic knitting & crocheting skills for this class including how to cast on and off.**

Saturday 14th August

### Oyster Bay - Heather Kingsley-Heath

Introducing a delicious new design for summer. Learn to combine stitches to create the banded and textured Oyster Bay bracelet. Discover how to make a new beaded clasp. This class will include design ideas for necklaces.



**Suitable for all levels including beginner.**

Saturday 21st August

### Encapsulated Beads - Gary Taylor

**£35.00**

Using Chain Maille techniques let Gary show you how to capture beads and CRYSTALLIZED™ Swarovski Elements to make your own creations even more stunning! The technique can be fiddly but just look at the stunning results! Cost of workshop includes use of tools & jump rings will be supplied.



**A basic working knowledge of Chain Maille essential.**

Saturday 28th August

### Angles for Dangles - Lynn Firth

Learn how to create 'Angles for Dangles' with Right Angle Weave. Learn how create angles in a continuous piece of beadwork that can be woven together & used to hang pendants or beadwork from. Make all in CRYSTALLIZED™- Swarovski Elements for a lavish necklace. An understanding of Right Angle Weave is essential.



**Not suitable for beginners.**

September 2010

### In the Studio for September...

This month we have a wonderful exhibition of work from international tutor, author and designer Laura McCabe. On display will be new pieces that Laura has been working on over the last couple of years. She produces elaborately beaded body adornment that combines Native American, African Zulu, and Victorian beadweaving techniques with modern materials and colour schemes.



Wednesday 1st & Thursday 2nd September

### Jewel of the Nile - Sylvia Fairhurst

£60.00

This two day class will cover the basic technique of Right Angle Weave progressing to working in the round and in three dimensional form. It will also cover stitch switching from Right Angle Weave to Peyote with shaping to capture a crystal button centrepiece or similar.



**Not suitable for beginners.**

Wednesday 8th September

10.00am - 12.30pm

### Learn to Bead Flat Herringbone - Elizabeth Selwood

£15.00

**Session 6.** This 9-session programme will introduce students to the most popular beading techniques and the materials & equipment used. Each session will include a worksheet on how to use the technique to produce a necklace, bracelet or earrings.

Book and pay for all 9 sessions to receive a 10% discount on the total course fee.



Saturday 11th September

### Pierrot Necklace & Earrings - Elizabeth Selwood

Combine your own choice of five colours of delicas from the huge selection that is available to create this simple and easy to wear five-pointed necklace, together with a pair of matching earrings. Complete the design with glass pearls, faceted beads or Swarovski crystals.



**Suitable for all levels of ability.**

Tuesday 14th September

### More Links Ribbons & Wraps - Sam Compton

Create a beautiful necklace and earrings set, by knotting ribbons and making droplets using wire techniques. Also learn how to make your own chain by using wire to link beads and crystals together.



**Suitable for all levels.**

Friday September 17th

### Caterpillar Bangles - Annette Bolton

Beautiful bangles using size 8 beads with added crystals to give a lovely crunchy texture along the outside edge. Create a small beaded bead to complete the design.



**Not suitable for beginners.**

Saturday September 18th

### Gemchip Collar - Lynn Davy

Stitch a simple band of fringed Peyote stitch and encrust it with semi-precious stone chips for a very wearable, textural necklace that's a lot easier to make than you might think!



**Suitable for all abilities.**

Monday 20th September

### **Nicolette Bracelet - Heather Laithwaite**

The lovely bracelet is made up using Peyote and Right Angle Weave and glistening with 4mm CRYSTALLIZED™- Swarovski Elements. It is a very versatile piece and can easily be adapted and made into a necklace and also a ring. Heather is the author of Dare to Bead and Dare to Bead Some More and will be visiting us from South Africa.



**Suitable for intermediate/experienced beaders.**

Thursday 23rd September

### **Elizabeth Crystal Necklace - Heather Laithwaite**

The photograph does not do this beautiful necklace justice! If you love crystals you will love this! Made with 4mm CRYSTALLIZED™- Swarovski Elements woven together and a strap in uneven count peyote, shaped into a sweetheart neckline. It can also be adapted into a bracelet with matching earrings.



**Suitable for intermediate/experienced beaders.**

Saturday 25th September

### **Treasured Talismans - Heather Kingsley-Heath**

Let's get vintage and create a treasure. Beaded elements are combined to make an intricate and detailed piece, use it as a pendant, or explore the 'kilt pin' concept. This workshop will utilize a variety of beading techniques including, Herringbone stitch, Peyote Stitch, Albion Stitch and Brick Stitch.



**Suitable for intermediate/experienced beaders.**

Tuesday 28th & Wednesday 29th September

### **Masterclass - Laura McCabe**

**£120.00**

This two day Masterclass with Laura will not disappoint! An exclusive Master Class just for us. This workshop promises to be an intense two day class. Laura will let us know the exciting project nearer the workshop date as she is working on lots of new things for 2010!



**Suitable for experienced beaders only.**

To book a place telephone 01747 830666 or online at [www.stitchncraft.co.uk](http://www.stitchncraft.co.uk)

Thursday 30th September

### Les Bijoux d'Eiffel - Laura McCabe

£60.00

Inspired by the form and structure of the Eiffel Tour, this bold bracelet design features beaded prong settings constructed using a combination of herringbone and peyote stitches. Each prong holds a suspended vintage Swarovski dentelle.

**Suitable for intermediate/experienced beaders.**



October 2010

### In the Studio for October...

An exciting exhibition with Alison Nash's creative art dolls. Alison has been making art dolls for several years & has used ready made patterns as well as designing some herself. Some are serious dolls and others are intended to bring a smile to your face!



Saturday 2nd October

### Georgian Jewels - Laura McCabe

£60.00

This unique design is a modern interpretation of the elaborate jewels of the Georgian period (1780-1830). It features six vintage Swarovski dentelles, three of which are bezeled and three of which are "prong" set using a unique herringbone/peyote stitch combination to create very structural forms



Sunday 3rd October

### Les Bijoux d'Eiffel - Laura McCabe

£60.00

Inspired by the form and structure of the Eiffel Tour, this bold bracelet design features beaded prong settings constructed using a combination of herringbone and peyote stitches. Each prong holds a suspended vintage Swarovski dentelle.

**Suitable for intermediate/experienced beaders.**



Wednesday 6th October

### Felted Evening Bag - Mary Phillips

£35.00

Make this beautiful purse using a variety of felting techniques with a wide colour selection of merino wool, delicate threads and silk fibres. You could colour co-ordinate it with a particular outfit or just work with what takes your fancy. Cost of the workshop includes felting materials.



**This workshop would be suitable for experienced felters and beginners**

Saturday 9th October

### Kingsmaille Chain Maille - Gary Taylor

£35.00

From knights of old to a night out! This weave transcends time to look as good today as years gone by. All tools will be available for your use on the day and all jump rings for this lovely technique will be supplied in the cost of the workshop.



**Suitable for all abilities.**

Wednesday 13th October

10.00am - 12.30pm

### Learn to Bead Square Stitch - Elizabeth Selwood

£15.00

**Session 7.** This 9-session programme will introduce students to the most popular beading techniques and the materials & equipment used. Each session will include a worksheet on how to use the technique to produce a necklace, bracelet or earrings.

**Book and pay for all 9 sessions to receive a 10% discount on the total course fee.**



Saturday 16th October

### Hannah Cuff - Pam Palmer

A sophisticated, embellished bracelet. The floral patterned base is enhanced with crystals, fire polished and cylinder beads. It is made using the little known Triangle Weave in its flat form. A reasonable amount of beading experience is needed for this project as size 15 cylinder beads will also be used.



**Suitable for intermediate/experienced beaders.**

Monday 18th October

### Woven Clutch Bag - Jane Matthews

These beautiful bags are made on a mesh form and woven with different stitches, yarns and beads to create a stunning 'one-of-a-kind' clutch bag. What about a lovely black bag for the evening? A strap or handle could be added if you wish and you won't see these in the high street shops!



**Suitable for all.**

Saturday 23rd October

### Crystal Flower Bracelet - Jane Matthews

A beautiful Crystal Flower Bracelet, classic yet extremely fashionable. Create it all in black for dramatic evening wear or choose several colours of CRYSTALLIZED™- Swarovski Elements crystals for a fabulous dazzling effect, which beautifully complements the lovely flower pattern.



**Suitable for all levels of ability.**

Tuesday 26th October

### Advanced Beaded Baubles - Lynn Firth

It's the time for one of our most popular classes - Beaded Baubles and this years model will not disappoint! Incorporating dazzling CRYSTALLIZED™- Swarovski Elements and Miyuki beads this 2010 design will use various beading techniques. Students will need a working knowledge of Right Angle Weave.



Design will be different to that shown.

**Suitable for intermediate/experienced beaders.**

Thursday 28th October

### Triangle Pendant - Sallyann Dunn

This is a fun pendant created with layers of peyote and herringbone joined together to form a 3D triangle encrusted with 3mm CRYSTALLIZED™- Swarovski Elements .



**Suitable for all levels. Some knowledge of peyote would be good but not essential.**

Saturday 30th October

### Beginners Beaded Bauble - Lynn Firth

Have you always wanted to try one of Lynn's fabulous Beaded Baubles but thought it was too difficult? Come along to this class, suitable for beginners and start your collection of baubles that you will add to year after year.

Design will be different to that shown.

**Suitable for beginners.**



November 2010

### In the Studio this Month...

This month sees a bright and lively display of work from Janet McCallum. Janet loves colour and texture and collects photographs of patterns in nature to use in her work. She is part of The Quilter editorial team, a graphic designer, part of the team at stitchncraft beads and a member of the textile artist group 'By Design', with whom she regularly exhibits.



Thursday 4th November

### Beginners Beaded Bauble - Lynn Firth

Have you always wanted to try one of Lynn's fabulous Beaded Baubles but thought it was too difficult? Come along to this class, suitable for beginners and start your collection of baubles that you will add to year after year.

Design will be different to that shown.

**Suitable for beginners.**



Saturday 6th November

### Tudor Windows - Gillian Lamb

The Tudor window bracelet is for the more advanced beader. The Tudor Window Bracelet combines several stitches, a form of Netting, Right Angle Weave and Herringbone stitch to obtain the final effect or if you prefer you can stay with the base bracelet to make a pearly necklace using an interesting netting technique.



**Suitable for intermediate/advanced beaders.**

To book a place telephone 01747 830666 or online at [www.stitchncraft.co.uk](http://www.stitchncraft.co.uk)

Tuesday 9th November

### Cabochons & Rings - Elizabeth Selwood

Enclose a beautiful semi-precious cabochon with beads, then create five rings in three sizes to build up this deceptively simple yet stylish necklace which is sure to have the wow factor!

**Not suitable for beginners.**



Wednesday 10th November

10.00am - 12.30pm

### Learn to Bead Brick Stitch - Elizabeth Selwood

£15.00

**Session 8.** This 9-session programme will introduce students to the most popular beading techniques and the materials & equipment used. Each session will include a worksheet on how to use the technique to produce a necklace, bracelet or earrings.

**Book and pay for all 9 sessions to receive a 10% discount on the total course fee.**



Thursday 11th November

### Advanced Beaded Baubles - Lynn Firth

It's the time for one of our most popular classes - Beaded Baubles and this years model will not disappoint! Incorporating dazzling CRYSTALLIZED™- Swarovski Elements and Miyuki beads this 2010 design will use various beading techniques. Students will need a working knowledge of Right Angle Weave.

Design will be different to that shown.

**Suitable for intermediate/experienced beaders.**



Saturday 13th November

2.00pm - 4.00pm

### Beady Bookmarks - Lynn Firth

£15.00

Learn how to make these tactile bookmarks that make excellent Christmas presents, if you can bear to give them away. Using simple jewellery making techniques which then can be adapted to create earrings and necklaces. The cost of this class includes silver or gold plated bookmark, links and chain plus use of tools on the day.

**Suitable for all.**



Thursday 18th November

### Carnival Flowers - Annette Bolton

These daisy like flowers are worked as individual pieces and can be added to bracelets, necklaces, textiles and more. Worked around a central large bead, with added crystals to give that little bit of sparkle.



**Not suitable for beginner.**

Saturday 20th November

10am - 12.30pm

### Christmas Tree Decorations - Sam Compton

£15.00

Create these charming decorations using wire, CRYSTALLIZED™-Swarovski Elements, beads and pearls. You will learn how to make dainty dragonflies, butterflies, Christmas trees and angels. A fun festive workshop!



**Suitable for all.**

Saturday 27th November

### Wire Wrapped Dangles - Lynn Davy

Get into the mood for the winter party season with these easy but effective sparkly dangles! Learn how to use simple tools to make wrapped loops and connections to add detail and movement to your focal beads, then discover how to turn your creations into earrings, pendants or necklaces.



**Suitable for all.**

December 2010

### In the Studio this month...

Come and be inspired by our very own beading group The Batty Beaders. The Batty Beaders are led by Elizabeth Selwood and meet at the Studio once a month to exchange ideas and work together, if they wish, towards exhibiting at the West of England Bead Fair at Wincanton. If you are interested in joining them please leave your details at the Studio for Elizabeth.



Saturday 4th December

### Advanced Beaded Baubles - Lynn Firth

It's the time for one of our most popular classes - Beaded Baubles and this years model will not disappoint! Incorporating dazzling CRYSTALLIZED™- Swarovski Elements and Miyuki beads this 2010 design will use various beading techniques. Students will need a working knowledge of Right Angle Weave.

Design will be different to that shown.

**Suitable for intermediate/experienced beaders.**



Wednesday 8th December

10.00am - 12.30pm

### Learn to Bead Right Angle Weave - Elizabeth Selwood

£15.00

**Session 9.** This 9-session programme will introduce students to the most popular beading techniques and the materials & equipment used. Each session will include a worksheet on how to use the technique to produce a necklace, bracelet or earrings.

**Book and pay for all 9 sessions to receive a 10% discount on the total course fee.**



Saturday 11th

### More Encapsulated Chain Maile - Gary Taylor

Let Gary teach you the tricks so that you can capture beautiful pendants and stones from CRYSTALLIZED™- Swarovski Elements. Create a stunning centrepiece for a dazzling necklace or bracelet that you won't find in the high street shops. Students must have working experience of Chain Maille.

**Suitable for intermediate/advanced levels.**



## Tutors' profiles

### Annette Bolton

Annette has 16 years teaching experience in beadwork, textiles, mixed media and design. She regularly teaches residential weekend courses as well as day classes. Annette has also taught at the Great British Bead Show



### Sam Compton

Sam has an Honours degree in European textile design and specialized in print and surface pattern. Sam qualified as a textile teacher and while doing so started to experiment more with textile embellishments, embroidery and beads.



### **Lynn Davy**

Lynn is an experienced beader specialising in intricate richly textured stitching with seed beads. She has had over 20 of her unique project designs published or accepted for publication in beading magazines both in the UK and the USA.



### **Sallyann Dunn**

Sallyann has a City and Guilds Certificate in Embroidery, Bead Needle Weaving and an Adult Teaching Certificate. She has been teaching beading for approximately 7 years and loves all beading.



### **Sylvia Fairhurst**

Sylvia has tried every type of craft since childhood but bored easily with them until she discovered beads! The rest, as they say, is history! Sylvia is currently Chairman of The Beadworkers Guild whilst also teaching regular classes and running her own bead business.



### **Lynn Firth**

Lynn has been in the embroidery and bead trade for over 18 years. She has taught for the Great British Bead Show and in Japan for the Japanese Bead Society as well as at the shop and to groups. She is a founder member of the Beadworkers Guild and a director of Stitch 'n' Craft.



### **Julia Hall**

Julia is an avid knitter, crocheter and beader with a wealth of experience across a broad spectrum of techniques. Julia has a real enthusiasm for sharing her skills and knowledge with others. She can also be found working in the Stitchncraft Studio on a regular basis.



### **Heather Kingsley-Heath**

Heather is a well known author and tutor in the beading world. She is currently the editor of the Beadworkers Guild Journal and has taught for the Great British Bead Show at Daventry.



### **Heather Laithwaite**

Heather is visiting us from South Africa and is the author of Dare to Bead and Dare to Bead Some More. She loves playing with colour and texture and to explore both elements through beading design. She is a well known international tutor.



### **Gillian Lamb**

Gillian regularly teaches beadwork in the UK and in 2006 taught at the first Kobe Bead Art Show in Japan. She is a founder member of the Beadworkers Guild and has also taught at the Great British Bead Show Daventry.



### **Laura McCabe**

Laura is primarily a self taught beadweaver visiting us from the USA. She exhibits her work in national and international beadwork exhibitions and teaches throughout the USA and the world. Laura is also author of Creating Crystal Jewellery with Swarovski.



### **Jane Matthews**

Jane's addiction to beads began more than 12 years ago making her first piece which was a brick stitch amulet. Since then she has gone on to create and teach her own designs at workshops in the north of England and on cruise liners.



### **Alison Nash**

Alison was a dress maker for 20 years owning a shop in Cornwall specialising in beaded wedding dresses, ball gowns and accessories. For the past four years she has been experimenting with beaded collars and bags to produce unique pieces of bead art.



### **Mary Philips**

As an artist and designer Mary finds felt making fascinating. 'It allows me to create original textiles from the basic wool fibres in the most beautiful colours'. Mary is now experimenting with felt and beadwork to bring the two disciplines together.



### **Elizabeth Selwood**

Elizabeth started her teaching career in 1966. In September 2003 Elizabeth became an obsessive beader and has now produced well over 1,000 items of beadwork. She is a member of the Beadworkers Guild, Batty Beaders and North Dorset Embroiderers Guild.



### **Gary Taylor**

Gary has an engineering background but for many years now he has been designing and making his own beads and jewellery which he sells. He is constantly exploring and designing with new techniques including Chain Maille and recently Art Clay Silver.



### **Melanie de Miguel**

Melanie has been beading since the age of 10. Ever experimenting and seeking to merge her two passions, beadwork and science, Melanie's designs began to take on a more organic approach. Mel teaches classes where she lives and has also taught for GBBS at Daventry.



### **Workshop Programme 2011**

#### **Available November 2010**

Make sure you don't miss out on extra dates for workshops, special offers, exclusives and events. Be sure to register on our email mailing list to keep up to date with what is happening at the Studio.