

CREATE
YOUR STYLE
with SWAROVSKI ELEMENTS

CRYSTAL PEARLS GEMCOLORS

Innovations Spring/Summer 2013
Launch February 2012



WWW.CREATE-YOUR-STYLE.COM

CRYSTAL PEARLS GEMCOLORS

The new Crystal Pearl Color Range

CONCEPT

Launching an extensive package of the new Gemcolors, SWAROVSKI ELEMENTS introduces a new look for Crystal Pearls. Polished and shiny, these colors have the finest opaque gemstones as natural counterparts - such as Lapis Lazuli, Turquoise, Jade, Coral and Ivory. As from now there will be two color lines. The **classic Crystal Pearls colors** for perfect replicas of genuine pearls and the **new CRYSTAL PEARLS GEMCOLORSs** that emulate natural opaque gemstones.

NEW LOOK

The new CRYSTAL PEARLS GEMCOLORSs present a new look for natural opaque gemstones, which offer unlimited combination possibilities with the colorful loose product assortment of SWAROVSKI ELEMENTS.

ASSORTMENT

The color range of CRYSTAL PEARLS GEMCOLORSs consists of the two renown and seven new colors.



Crystal Red Coral Pearl
(001 718)



Crystal Ivory Pearl
(001 708)



Crystal Lapis Pearl
(001 717)



Crystal Coral Pearl
(001 816)



Crystal Jade Pearl
(001 715)



Crystal Dark Lapis Pearl
(001 719)



Crystal Pink Coral Pearl
(001 716)



Crystal Turquoise Pearl
(001 709)



Crystal Mystic Black Pearl
(001 335)

CRYSTAL PEARLS GEMCOLORS

Product & color combinations



CRYSTAL PEARLS GEMCOLORS

Product & color combinations



CRYSTAL PEARLS GEMCOLORS

Product & color combinations



CRYSTAL PEARLS GEMCOLORS

Product & color combinations



CRYSTAL PEARLS GEMCOLORS

Product & color combinations



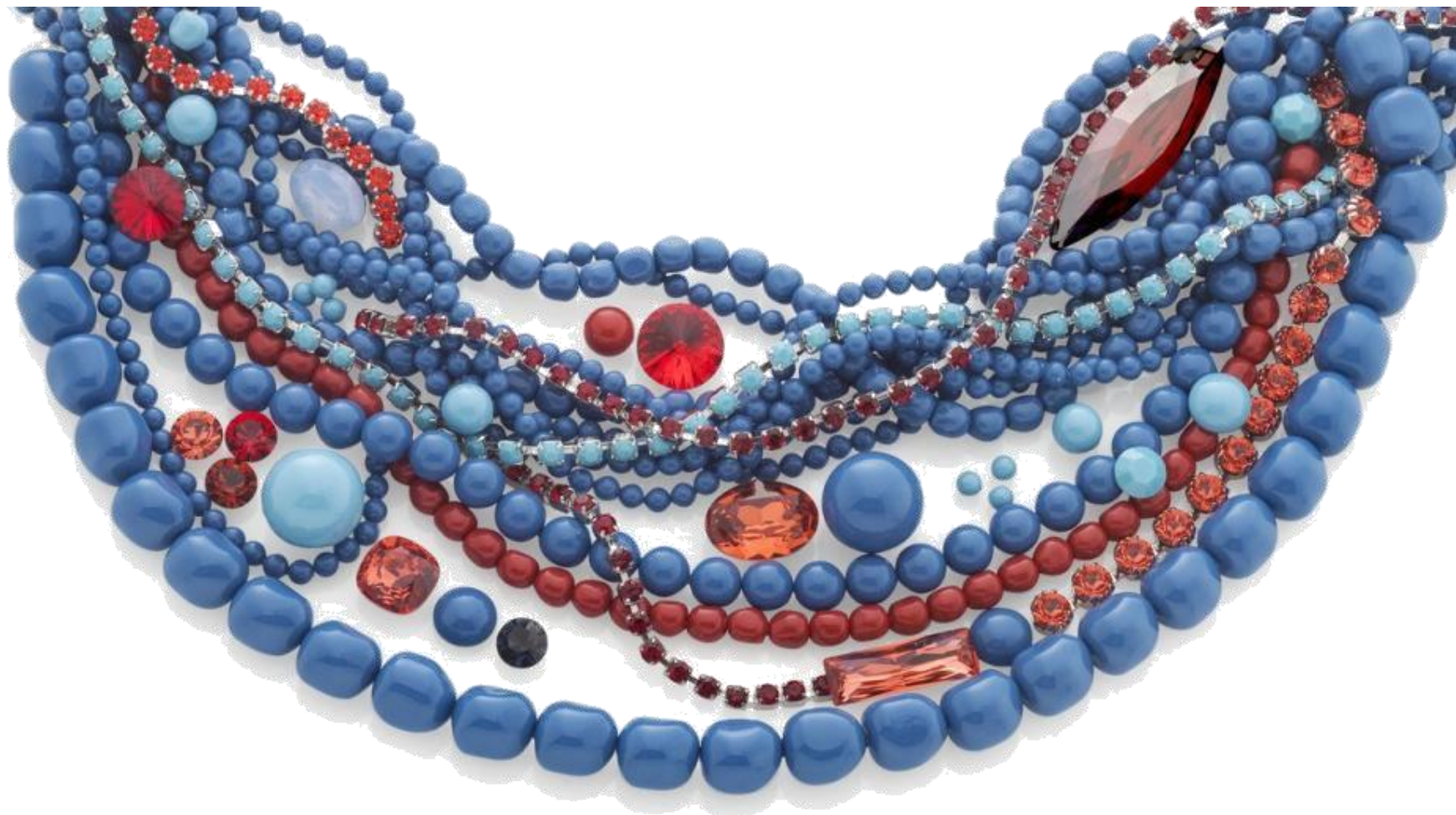
CRYSTAL PEARLS GEMCOLORS

Product & color combinations



CRYSTAL PEARLS GEMCOLORS

Product & color combinations



CRYSTAL PEARLS GEMCOLORS

Product & color combinations



CRYSTAL PEARLS GEMCOLORS

Product & color combinations



CRYSTAL PEARLS GEMCOLORS

Product & color combinations



CRYSTAL PEARLS GEMCOLORS

Product & color combinations



To create an opulent all-white classical look, **Crystal Ivory Pearl** is perfectly combined with the following Crystal Colors:

- Crystal (001)
- White Opal (234)
- Crystal Moonlight (001 MOL)
- Crystal White Pearl (001 650)



Crystal Ivory Pearl combined with precious golden tones provides the base for elegant jewelry pieces.

- Crystal (001)
- Crystal Satin (001 SAT)
- Light Colorado Topaz (246)
- Crystal Silver Night (001 SINI)
- Crystal Bronze Shade (001 BRSH)
- Crystal Golden Shadow (001 GSHA)
- Crystal Brown Pearl (001 815)
- Crystal Platinum Pearl (001 459)
- Crystal Dark Grey Pearl (001 617)
- Crystal Bright Gold Pearl (001 306)
- Crystal Black Pearl (001 298)

CRYSTAL PEARLS GEMCOLORS

Product & color combinations



Crystal Pink Coral Pearl and the new Crystal Rose Peach Pearl combined with milky shades of white.

- White Opal (234)
- Vintage Rose (319)
- Light Rose (209)
- Rose (209)
- Indian Pink (289)
- Padparadscha (542)
- Rose Peach (262) ^{NEW!}
- Crystal Ivory Pearl (001 708) ^{NEW!}
- Crystal Golden Shadow (001 GSHA)
- Crystal Rose Peach Pearl (001 674) ^{NEW!}



Eye-catching **Crystal Red Coral Pearl** combined with sparkling bright reds.

- Padparadscha (542)
- Siam (208)
- Burgundy (515)
- Crystal Red Magma (001 REDM)

CRYSTAL PEARLS GEMCOLORS

Product & color combinations



Crystal Red Coral Pearl perfectly matches darker reds together with an elegant brown.

- Siam (208)
- Garnet (241)
- Burgundy (515)
- Smoky Quartz (225)
- Jet Nut (280 NUT)
- Crystal Deep Brown Pearl (001 414)
- Crystal Red Magma (001 REDM)
- Crystal Bronze Shade (001 BRSH)
- Crystal Bordeaux Pearl (001 538)
- Crystal Maroon Pearl (001 388)
- Crystal Burgundy Pearl (001 301)
- Crystal Mystic Black Pearl (001 335)



Mixed with **Crystal Turquoise** and **Crystal Coral Pearl** new Crystal Blend Colors.

- Light Siam (227)
- Montana (207)
- Chrysolite Opal (294)
- Turquoise (267)
- Caribbean Blue Opal (394)
- Erinite (360)
- Light Topaz (226)
- Sunflower (292)
- Crystal Red Magma (001 REDM)
- Crystal Bermuda Blue (001 BBL)
- Crystal Fern Green-Topaz Blend (724) ^{NEW!}
- Crystal Burgundy-Blue Zircon (723) ^{NEW!}
- Crystal Coral Pearl (001 816) ^{NEW!}
- Crystal Turquoise Pearl (001 709) ^{NEW!}

CRYSTAL PEARLS GEMCOLORS

Product & color combinations



Crystal Lapis Pearl combined with **Crystal Turquoise** and **Crystal Red Coral Pearls** create the feeling of traditional Northern American jewelry.

- Padparadscha (542)
- Light Siam (227)
- Montana (207)
- Air Blue Opal (285)
- Turquoise (267)
- Crystal Red Magma (001 REDM)
- Crystal Turquoise Pearl (001 709) ^{NEW!}
- Crystal Red Coral Pearl (001 718) ^{NEW!}



Crystal Turquoise Pearl and bright blue tones provide a fresh summer feeling.

- Aquamarine (202)
- Turquoise (267)
- Indicolite (379)
- Caribbean Blue Opal (394)
- Crystal Metallic Blue (001 METBL)
- Crystal Bermuda Blue (001 BBL)

CRYSTAL PEARLS GEMCOLORS

Product & color combinations



Crystal Lapis Pearl in tone-on-tone combinations perfectly match the on-going denim trend.

- Air Blue Opal (285)
- Aquamarine (202)
- Montana (207)
- Capri Blue (243)
- Denim Blue (266)
- Crystal Bermuda Blue (001 BBL)



Crystal Dark Lapis Pearl is the perfect base for multiple color combinations such as all shades of violets.

- Fuchsia (502)
- Cyclamen Opal (398)
- Amethyst (204)
- Purple Velvet (277)
- Montana (207)
- Capri Blue (243)
- Burgundy (515)
- Crystal Aurore Boreale (001 AB)
- Crystal Vitrail Light (001 VL)
- Crystal Volcano (001 VOL)

CREATE YOUR STYLE

with SWAROVSKI ELEMENTS

