

CREATE
YOUR STYLE
with SWAROVSKI ELEMENTS

DESIGN PROJECT

EASTER NEST HAIR TIE



EASTER NEST HAIR TIE



SWAROVSKI ELEMENTS

Supplies & Tools

Version 1

Article	Product Group	Article No.	Amount	Size	Color	Color Code
	Fancy Stones	4137	6 pcs.	15x11 mm	Crystal Sahara	001 SAH
	Beads	5531	4 pcs.	18mm	Crystal Red Magma	001 REDM
	Beads	5754	4 pcs.	8mm	Air Blue Opal	285

Supplies

Elastic strap flat, 4 mm, beige, 32 cm
 Embroidery yarn, bordeaux, 3 m
 Embroidery yarn, green, 1.5 m
 Embroidery yarn, light blue, 1.5 m
 Embroidery yarn, yellow, 3 m

Tools

Embroidery needle
 Pins
 Ruler
 Scissors

Version 2

Article	Product Group	Article No.	Amount	Size	Color	Color Code
	Beads	5139	6 pcs.	12.5mm	Light Topaz	226
	Pendants	6202	4 pcs.	10.3x10 mm	Air Blue Opal	285
	Pendants	6906	4 pcs.	20 mm	Olivine	228

Supplies

Elastic strap flat, 4 mm, beige, 32 cm
 Embroidery yarn, olive, 3 m
 Embroidery yarn, yellow, 1.5 m
 Embroidery yarn, light blue, 1.5 m
 Embroidery yarn, mid blue, 3 m

Tools

Embroidery needle
 Pins
 Ruler
 Scissors

STEP 1



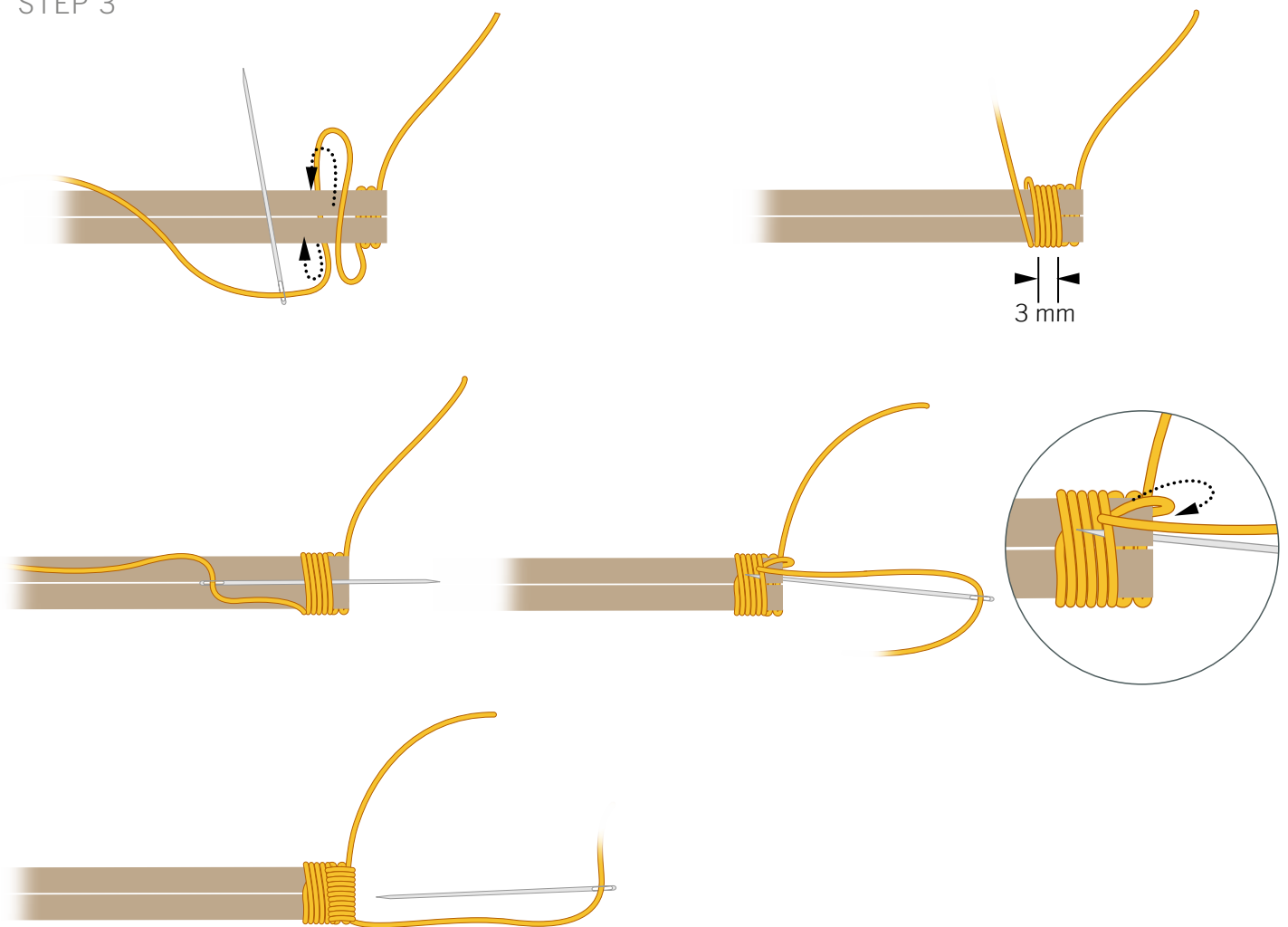
16 cm x2



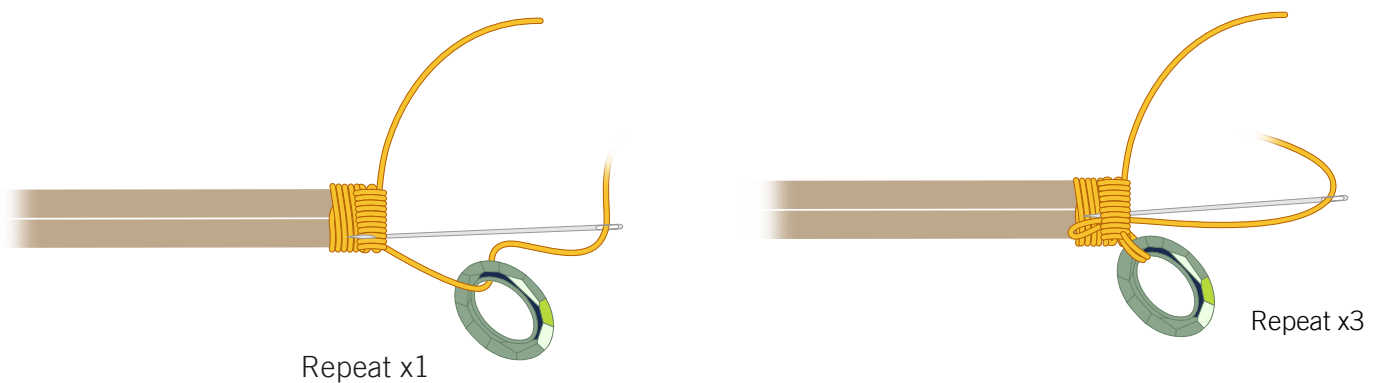
STEP 2

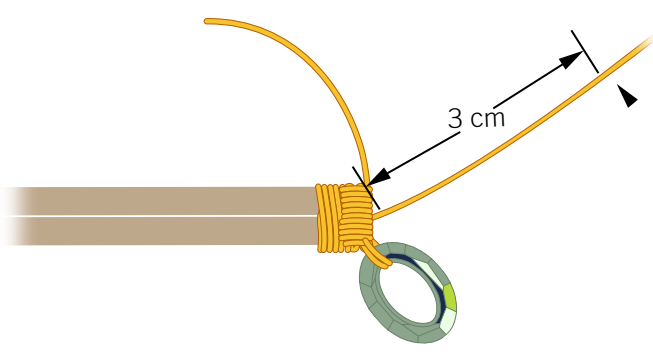


STEP 3

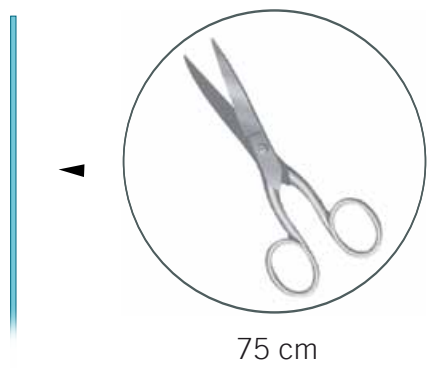


STEP 4

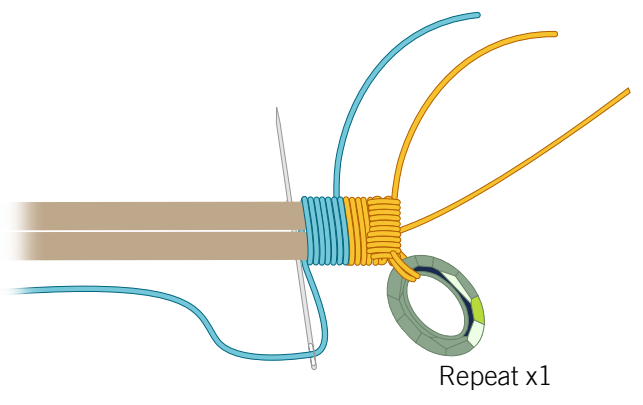
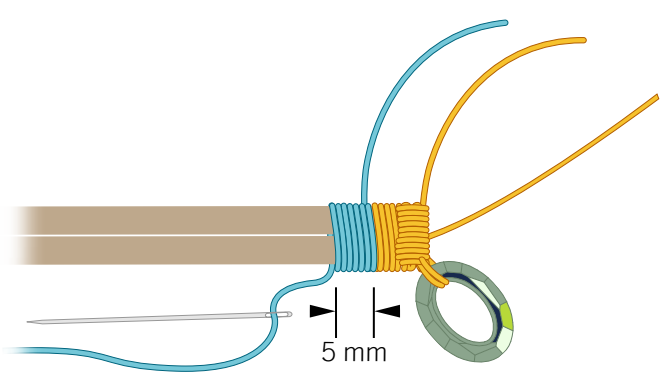
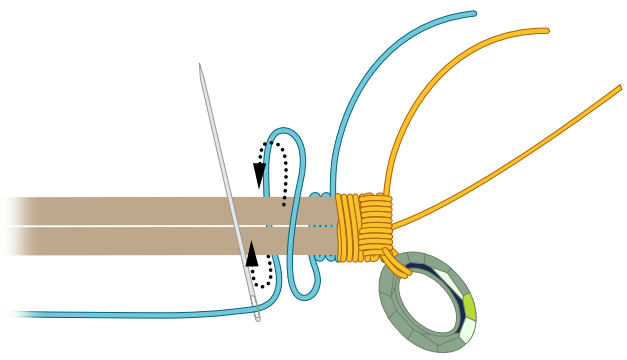




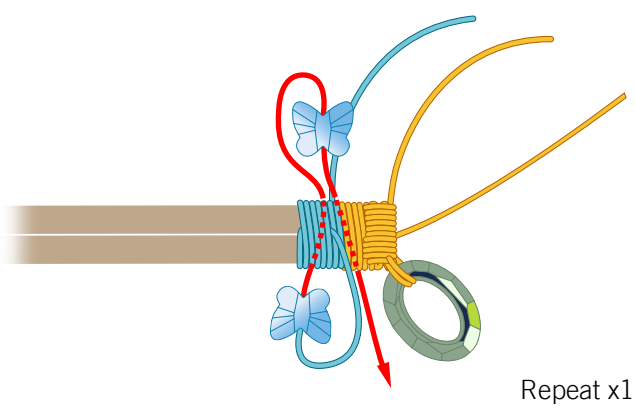
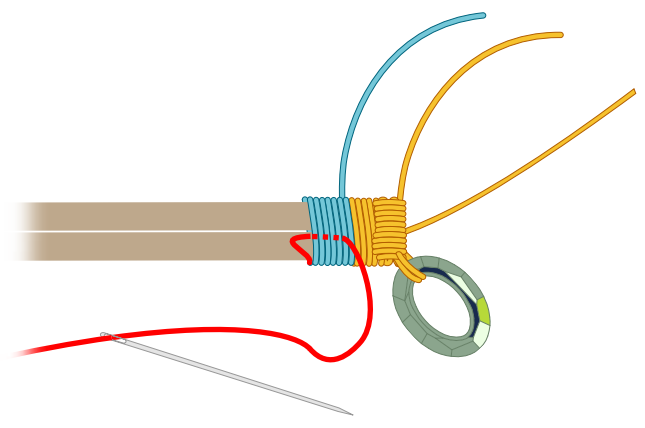
STEP 5

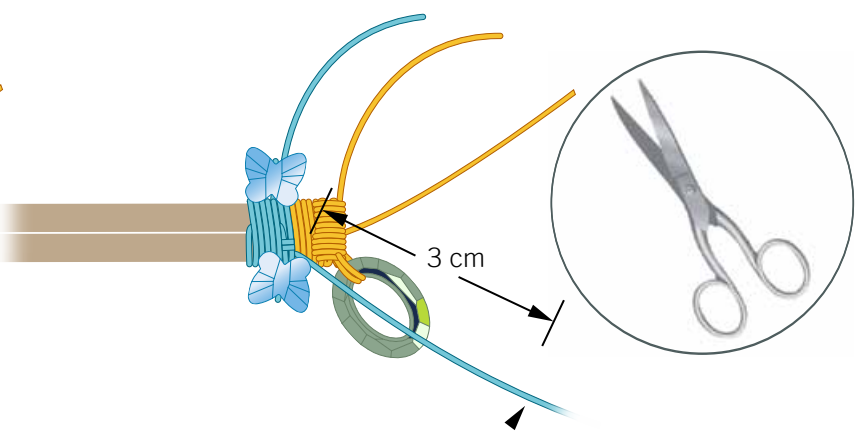
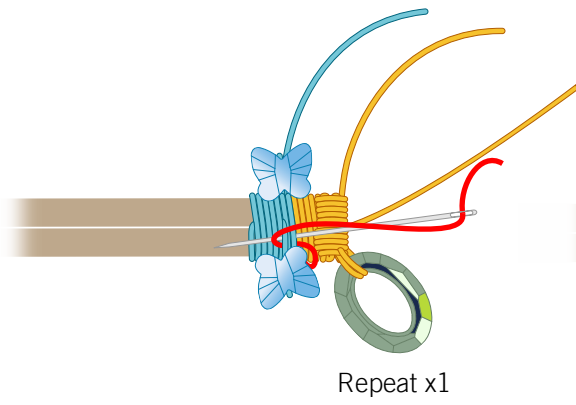


Repeat step 2:

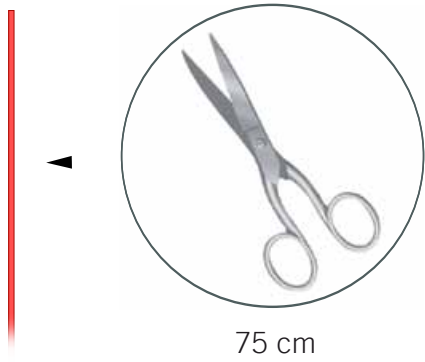


STEP 6

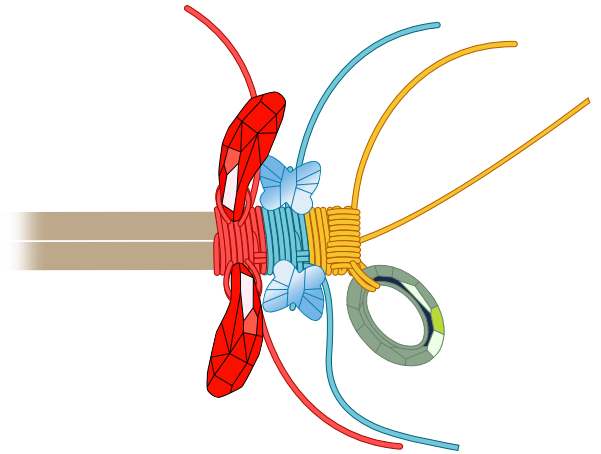




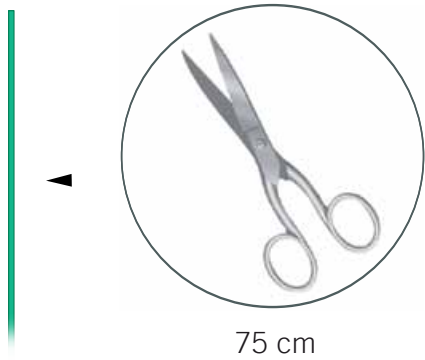
STEP 7



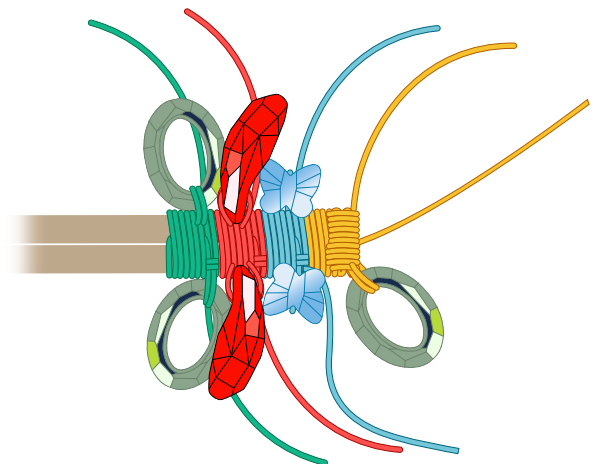
Repeat steps 5 - 6:



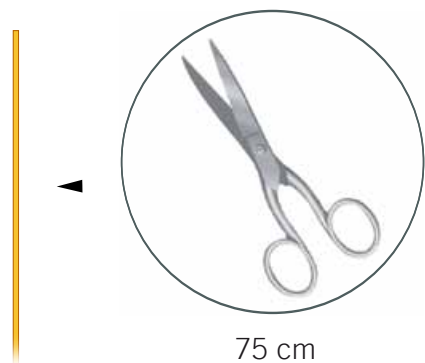
STEP 8



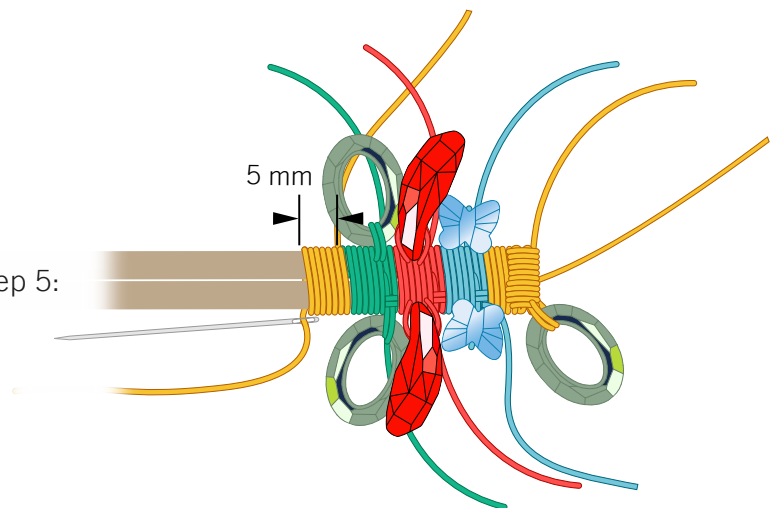
Repeat steps 5 - 6:

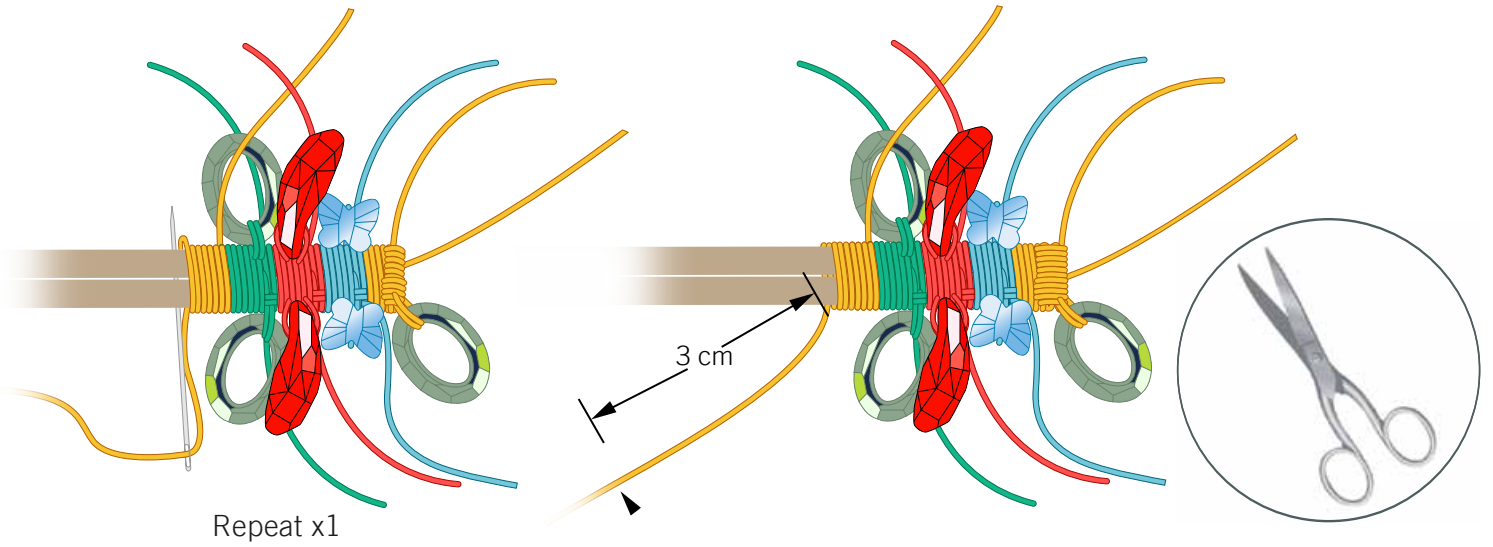


STEP 9

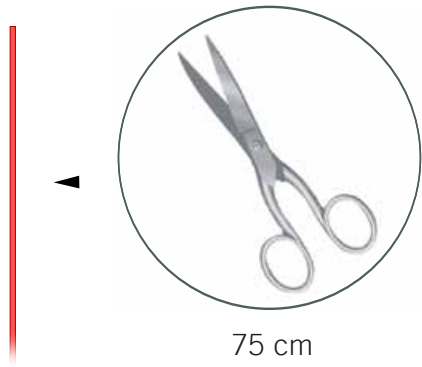


Repeat step 5:

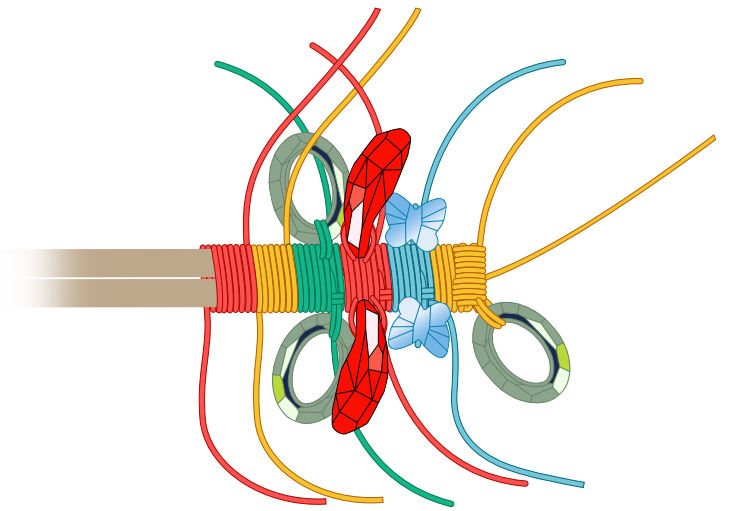




STEP 10



Repeat step 9:



STEP 11

Repeat steps 2 - 10:



