

# Christmas in Siam

## (December)

Designed by Susan Kazarian



### Swarovski Elements:

PRODUCT GROUP	ARTICLE NO.	AMOUNT	SIZE	COLOR	COLOR CODE
Filigrees	62019	5		Siam, It Siam, Siam	208,227,208
Pendants	6628	13	8mm	Dark Moss Green	260
Cupchain & findings	4328	3	13x7.8mm	Siam	208
Cupchain & Findings	4328	2	10x6mm	Siam	208
Mini oval beads	5051	14	10x8mm	Siam	208
Cabochette bead	5026	14	6mm	Siam	208
Bicone bead	5328	2	4mm	Dark Moss Green	260
Button	1811/100	2	12mm	Siam	208

### Supplies

1 pair	SS earring blank TierraCast® 90-1120-00
3 pc	1.25" Radiant ring TierraCast® 94-3112-61
9 pc	Medium hammertone ring TierraCast® 94-3086-61
7"	9x6mm Embossed cable chain TierraCast® 20-0325-63
1 pc	Large quatrefoil TierraCast® 94-3141-61
5 pc	Oval jump rings TierraCast® 01-0018-01
15 pc	Round jump rings TierraCast® 01-0025-01
4 pc	SS crimp beads TierraCast® 01-0030-01
4 pc	SS 3mm crimp bead covers TierraCast® 01-0032-01
16"	0.015 Beadalon® beading wire

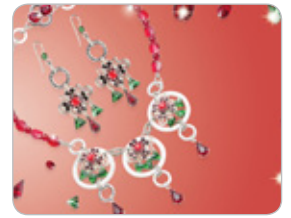
### Instructions for earring

- **Step 1:** Open 6 round jump rings. Remove two links off of the 9x6mm Embossed cable chain. Set aside.
- **Step 2:** Slip on (1) art. 5328 4mm Dk moss green bicone onto (1) earring blank and turn a simple loop. Repeat for the second piece. Set aside.
- **Step 3:** Using (1) round jump ring, attach (1) art. 4328 10x6mm Siam tear drop pendant to the center loop on the long side of the Filigree. Using (1) jump ring each, attach (2) art. 6628 8mm Xillion triangle in Dk. Moss green to the outside loops on the long side of the filigree. Note: One Xillion triangle should be on the left and on the right of the Siam pear drop.
- **Step 4:** Attach (1) oval jump ring to (1) medium hammertone ring, before closing the jump ring, attach the unit to the top of the filigree. Note: the location is exactly opposite that of the space holding the Siam pear drop.
- **Step 5:** Attach (1) link from the 9x6mm Embossed cable chain to the medium hammertone ring from step 4. Next, slip on one earring blank made in step 2 and close the link.
- **Step 6:** Repeat steps 3-5 for the second earring.

# Christmas in Siam

## (December)

Designed by Susan Kazarian



### Instructions for necklace

- **Step 1:** Using the round jump rings, attach three art 6628 Xilion triangles in Dk. Moss green to the bottom three loops on the long side of the filigree piece. Repeat this step twice more. Set aside.
- **Step 2:** Open and remove each link on the 9x6mm Embossed cable chain. Note: you should have a minimum of 24 pieces. Set aside
- **Step 3:** Using (1) oval jump ring, attach (1) art. 4328 13x7.8mm Siam pendant to (1) medium hammertone ring. Repeat twice more. Set aside.
- **Step 4:** Using (1) chain link from step 2, slip into the top left loop on the filigree piece and attach the link to (1) 1.25" Radiant ring. Repeat this step for the right side. Note: if necessary, refer to the photo for placement.
- **Step 5:** Repeat step 4 for the remaining two filigree pieces.
- **Step 6:** Using (1) filigree component made in step 4, open the left chain link and attach to (1) medium hammertone ring.
- **Step 7:** Using (1) chain link from step 1, attach to the right chain link of the filigree component from step 6. Repeat this step with a second chain link. Note: both links on the right should sit side by side.
- **Step 8:** Using the second filigree component made in step 5, open the left chain link and attach to the double links created in step 7 on the first filigree component. Note: if necessary, refer to the photo for placement.
- **Step 9:** Using (1) chain link from step 1, attach to the right chain link of the second filigree component from step 8. Repeat this step with a second chain link. Note: both links on the right should sit side by side.
- **Step 10:** Using the third filigree component made in step 5, open the left chain link and attach to the double links on the second filigree component. Note: If necessary, refer to the photo for placement.
- **Step 11:** Open the right chain link of the third filigree component and attach it to (1) medium hammertone ring.
- **Step 12:** Attach (1) chain link, from step 1 to the left medium hammertone link and attach (1) chain link, from step 1, to the right medium hammertone link.
- **Step 13:** Using the drop component made in step 3, attach (1) chain link to the medium hammertone link and to the bottom of Radiant ring on the first filigree component. Attach one more chain link between the medium hammertone ring and the Radiant ring. Note: the chain links should sit side by side. Make sure the tear drop is facing the right way. Repeat this step for the middle and right filigree components.
- **Step 14:** Attach (1) chain link from step 2 to (1) button Art. 1811/100 Siam. Attach a second chain link to the first chain link and to (1) medium hammertone ring. Attach (1) more chain link to the medium hammertone link. Repeat this step once more. Note: the two components made are for the closure of the necklace. Set aside.
- **Step 15:** Cut the 16" beading wire in half.
- **Step 16:** Crimp one beading wire to the left chain link from step 12. Attach crimp cover. Repeat this step using the second beading wire to the right chain link from step 12. Attach crimp cover.
- **Step 17:** Beginning with one side, slip onto the beading wire (1) Art. 5051 10x8mm Mini oval bead in Siam and (1) Art. 5026 6mm Cabochette bead in Siam. Repeat this pattern 6 times more. Crimp the wire to the loose chain link on one component made in step 14. Note: do not attach the wire to the button side. Refer to the photo for placement if necessary.
- **Step 18:** Repeat step 17 for the opposite side of the necklace.
- **Step 19:** Clasp the necklace: Insert one side of the necklace from the button into the Quatrefoil link. It will naturally want to sit in one of the curves. Pull it up a bit and out of the way and bring the second side of the necklace from the button into the Quatrefoil link. Both buttons should sit into the opposite side curves. While wearing the necklace, the closure will not come undone. But be careful taking it off, as the Quatrefoil link is not attached to the necklace and you don't want to lose it.