

CREATE
YOUR STYLE

SWAROVSKI

INSTRUCTIONS

2014 CALENDAR MONTHLY PROJECT INSTRUCTIONS

Cascades of Autumn (Cover)

Designed by Ron Rock



Swarovski Elements:

PRODUCT GROUP	ARTICLE NO.	AMOUNT	SIZE	COLOR	COLOR CODE
Beads	5030	18 pcs	8mm	Crystal Golden Shadow	001 GSHA
Beads	5030	7 pcs	18mm	Crystal Golden Shadow	001 GSHA
Beads	5328	25 pcs	4mm	Crystal Golden Shadow	001 GSHA
Beads	5328	50 pcs	2.5mm	Crystal Golden Shadow	001 GSHA
Beads	5040	36 pcs	6mm	Crystal Golden Shadow	001 GSHA
Beads	5328	18 pc	4mm	Light Colorado Topaz	246
Beads	5328	18 pc	4mm	Mocca	286
Beads	5328	20 pc	6mm	Sand Opal	287
Beads	5328	9 pcs	10mm	Topaz	203
Beads	5000	100 pc	4mm	Jet Nut 2X	280 NUT2
Beads	5000	36 pcs	6mm	Jet Nut 2X	280 NUT2
Beads	5000	8 pcs	8mm	Jet Nut 2X	280 NUT2
Beads	5000	8 pcs	8mm	Light Smoked Topaz	221
Beads	5000	4 pcs	10mm	Smoked Topaz	220
Crystal Pearls	5810	75 pcs	3mm	Crystal Bright Gold	001 306
Crystal Pearls	5810	20 pcs	4mm	Crystal Bright Gold	001 306
Crystal Pearls	5810	60 pcs	6mm	Crystal Bright Gold	001 306
Crystal Pearls	5810	55 pcs	8mm	Crystal Bright Gold	001 306
Crystal Pearls	5810	20 pcs	10mm	Crystal Bright Gold	001 306
Rondelles	47408	12 pcs	8mm	Light Smoked Topaz	221
Filigrees	62004	10 pc	—	Light Smoked Topaz/Light Topaz/Light Smoked Topaz	221, 226, 221

Supplies

20	2X2 Crimp Beads TierraCast® 01-0030-13
20	3mm Crimp Covers TierraCast® 01-0032-13
180"	Beadalon® .018 stringing wire
14"	20 gauge Gun Metal Artistic Wire®
2	part epoxy glue
—	Scotch tape

Cascades of Autumn

(Cover)

Designed by Ron Rock



Instructions

- **Step 1:** Using 2 Filigrees art 62004 and 2 part epoxy glue together and set aside for 24 hours. Repeat 4 more times.
- **Step 2:** Cut 20 gauge wire into 7 2" pieces. Make a simple loop at one end of each wire. Slide on one bead art 5030 18mm Crystal Golden Shadow and make a simple loop. Repeat 6 more times and set aside.
- **Step 3:** Cut beading wire into ten 18" pieces and set aside.
- **Step 4:** Using one filigree component made in Step 1 begin to attach 1 piece of beading wire to one hole in the bottom of the filigree. Crimp to close and attach crimp cover. Repeat 4 more times in holes next to the first one totaling of 5 separate strands from 5 separate holes.
- **Step 5:** Using all of the Bright gold pearls, various Crystal Golden Shadow Beads and 6 rondelles randomly string onto each wire until you reach 12" of beading. Tape each end. Take the five strands and begin to braid them together. When complete, begin to slide on one crimp bead on each strand and attach to a filigree component made in Step 1. Crimp to close and attach crimp cover. Repeat 4 more times in holes next to the first one totaling of 5 separate strands from 5 separate holes. Set aside.
- **Step 6:** Using one filigree component made in Step 1 begin to attach 1 piece of beading wire to one hole in the bottom of the filigree. Crimp to close and attach crimp cover. Repeat 4 more times in holes next to the first one totaling of 5 separate strands from 5 separate holes.
- **Step 7:** Using all the rest of the Beads and 6 rondelles randomly string onto each wire until you reach 12" of beading. Tape each end. Take the five strands and begin to braid them together. When complete, begin to slide on one crimp bead on each strand and attach to the end of the filigree end from Pearl strands. Crimp to close and attach crimp cover. Repeat 4 more times in holes next to the first one totaling of 5 separate strands from 5 separate holes. Set aside.
- **Step 8:** Starting with the opposite end of the pearl strands attach a bead component made in Step 2. Repeat 4 more times. Then attach a filigree component made in Step 1, then a bead component made in Step 2, then attach a filigree component made in Step 1, then a bead component made in Step 2. Now attach last Bead component to opposite end of necklace filigree component to close the necklace.

Cosmic Ice

(January)

Designed by Susan Kazarian



Swarovski Elements:

PRODUCT GROUP	ARTICLE NO.	AMOUNT	SIZE	COLOR	COLOR CODE
CRYSTAL VERSION:					
Rivets	53001	5	SS29	Blk diamond	215
Cosmic Ring	4139	1	30mm	Crystal	001
JET VERSION:					
Rivets	53001	2	SS29	Jet	280
Cosmic Ring	4139	1	30mm	Jet	280

Supplies

1 pc	12mm beaded spacer large hole TierraCast® 94-5691-12
1 pc	½" distressed slide with loop TierraCast® 94-3160-40
1 pc	4mm compression rivet TierraCast® 01-0060-11
1 pc	½" x 10" strap – antique silver TierraCast® 21-0010-20
1 pc	16g jump ring TierraCast® 01-0020-01
1 pc	Large D-ring bar TierraCast® 94-6187-61 (as seen on Jet version)
1 pc	¾" Annie's toggle TierraCast® 94-6160-12 (bar only – as seen on Crystal version)
Tools	<ul style="list-style-type: none"> • Crystal applicator tool (www.jewelrythings.com) • Revolving leather punch • Hardware store hammer • Steel block

Cosmic Ice

(January)

Designed by Susan Kazarian



Instructions

- **Step 1:** Using the leather strap, ~1.5" from one end of the leather, make a hole in the center using the revolving leather punch using the smallest diameter setting.
- **Step 2:** Using the Crystal applicator tool, rivet (1) crystal rivet art. 53001 in black diamond through the 12mm beaded spacer through the hole made in step 1.
Note: make sure to use enough pressure so the rivet holds in place.
- **Step 3:** From the rivet side of the leather, fold the leather through (1) Art. 4139 30mm in Crystal Cosmic ring. Note: the crystal rivet should be sitting just about ¼" from the inside edge of the Cosmic ring.
- **Step 4:** While holding the leather in place: punch a hole through both pieces of leather approximately ¼" from the opposite end of the rivet. Note: see photo for proper placement
- **Step 5:** Using (1) 4mm compression rivet set, insert the nail head side through the top of the leather and the back through the wrong side of the leather. *Note: the top and the bottom of the compression rivet should snap in place. Rivet in place using your hammer and block.*

Note: see www.tierracast.com for instructions on how to use their rivets

- **Step 6:** Using the leather punch, center another hole ~1" from the compression rivet in step 5. Make two additional holes ~1/2" from the hole just created.
- **Step 7:** Using (3) crystal rivet Art. 53000 in black diamond and the Crystal applicator tool, attach a rivet in each of the three holes created in step 6.
- **Step 8:** Slip the open end of the leather through the ½" distressed slide w/loop and fold the leather end on the wrong side. Note: at this point measure the bracelet for fit and adjust the leather length accordingly
- **Step 9:** Holding the leather together, punch a hole in the center of both pieces of leather.
- **Step 10:** Using (1) crystal rivet Art. 53000 in black diamond and the Crystal applicator tool, attach a rivet to both sides of the leather.
- **Step 11:** Attach the jump ring to the loop on the distressed slide and to the loop on the bar of the Annie's toggle.

Note: For the Jet crystal version, eliminate steps 6 and 7 and use the large D-ring bar for the closure.

Love Story of Hearts (February)

Designed by Ron Rock



Swarovski Elements:

PRODUCT GROUP	ARTICLE NO.	AMOUNT	SIZE	COLOR	COLOR CODE
Beads	5328	10 pcs	4mm	Crystal Lilac Shadow	001 LISH
Beads	80201	3 pcs	15mm	Lt Amethyst	212
Beads	80301	2 pcs	10.5mm	Lt Amethyst	212
Pendants	6260	1 pc	17mm	Crystal Antique Pink	001 ANTP
Pendants	6260	1 pc	17mm	Amethyst	204
Pendants	6260	1 pc	17mm	Rosaline	508
Pendants	6261	1 pc	17mm	Crystal Antique Pink	001 ANTP
Pendants	6261	1 pc	17mm	Amethyst	204
Pendants	6261	1 pc	17mm	Rosaline	508
Pendants	6262	1 pc	17mm	Amethyst	204
Pendants	6262	1 pc	17mm	Rosaline	508

Supplies

7.5"	Brass Ladder Chain 6x3.5mm TierraCast® 20-0225-63
6	8mm round jump rings TierraCast® 01-0025-01
2	10mm round jump rings TierraCast® 01-0026-01
2	4mm oval jump rings TierraCast® 01-0018-01
10	2" head pins TierraCast® 01-0028-01
1	Sacred Heart toggle clasp TierraCast® 94-6133-12

Instructions

- **Step 1:** Slide on one Bead art 5328 4mm Crystal Lilac Shadow to a headpin. Make a simple loop. Repeat 9 more times and set aside.
- **Step 2:** Attach one 8mm jump ring to one Pendant art 6260 17mm Crystal Antique Pink and set aside. Attach one 8mm jump ring to one Pendant art 6260 17mm Amethyst and set aside. Attach one 8mm jump ring to one Pendant art 6260 17mm Rosaline and set aside. Attach one 8mm jump ring to one Pendant art 6261 17mm Crystal Antique Pink and set aside. Attach one 8mm jump ring to one Pendant art 6261 17mm Amethyst and set aside. Attach one 8mm jump ring to one Pendant art 6261 17mm Rosaline and set aside. Attach one 10mm jump ring to one Pendant art 6262 17mm Amethyst and set aside. Attach one 10mm jump ring to one Pendant art 6262 17mm Rosaline and set aside.
- **Step 3:** Using one oval jump ring attach one end of the Sacred Heart toggle to end of the chain. Slide on one Bead art 80201 14mm Lt Amethyst, one Bead art 80301 14mm Lt Amethyst, one Bead art 80301 14mm Lt Amethyst, one Bead art 80201 14mm Lt Amethyst. Separate these 5 beads equally on the chain and add on opposite end of the Sacred Heart Toggle.
- **Step 4:** To hold in place these BeCharmed beads attach bead components made in Step 1 on either side of each BeCharmed Bead
- **Step 5:** Now randomly attach each charm created in Step 2 between the BeCharmed Beads.

Forty Shades of Green (March)

Designed by Ron Rock



Swarovski Elements:

PRODUCT GROUP	ARTICLE NO.	AMOUNT	SIZE	COLOR	COLOR CODE
Beads	5000	12 pcs	4mm	Dark Moss Green	260
Beads	5000	12 pcs	8mm	Dark Moss Green	260
Beads	5752	36 pcs	8mm	Peridot	214
Beads	5752	6 pcs	12mm	Peridot	214
Beads	5752	36 pcs	8mm	Fern Green	291
Beads	5752	6 pcs	12mm	Fern Green	291
Beads	5752	18 pcs	8mm	Sunflower	292
Pendants	6764	3 pcs	19mm	Dark Moss Green	260

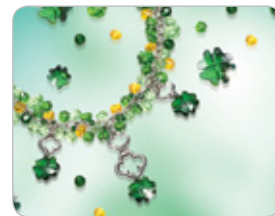
Supplies

18"	Embossed Cable Chain 9x6mm TierraCast® 20-0325=63
3	8mm round jump rings TierraCast® 01-0020-61
1	Large Leaf Toggle TierraCast® 94-6054-12
3	Medium Quatrefoil Links TierraCast® 94-3140-61
1	Large Quatrefoil Links TierraCast® 94-3141-61
132"	20 gauge Silver Artistic Wire®

Forty Shades of Green

(March)

Designed by Ron Rock



Instructions

- **Step 1:** Using the cable chain, remove (unlink) 8 pieces and set aside.
- **Step 2:** Take one Pendant art 6764 19mm Dark Moss Green and attach one round jump ring. Repeat two more times and set aside.
- **Step 3:** Take one medium Quatrefoil and attach one pendant from Step 2. Repeat once and set aside.
- **Step 4:** Take one large Quatrefoil and attach one pendant from Step 2. Using two links from Step 1 link together the large Quatrefoil with a medium Quatrefoil. Set aside.
- **Step 5:** Using 16" of the Embossed Cable Chain find the center and attach the link made in Step 4 with two links from Step 1. Moving 6 links to the right on the chain attach one link made in Step 3 with two links made in Step 1. Repeat this step by moving 6 links to the left of the center.
- **Step 6:** Cut the 20 gauge wire into 132 1" pieces. Turn the ends to create 132 headpins
- **Step 7:** Using one headpin slide on one Bead art 5000 4mm Dark Moss Green and make a simple loop. Repeat 11 more times and set aside.
- **Step 8:** Using one headpin slide on one Bead art 5000 8mm Dark Moss Green and make a simple loop. Repeat 11 more times and set aside.
- **Step 9:** Using one headpin slide on one Bead art 5752 8mm Fern Green and make a simple loop. Repeat 35 more times and set aside.
- **Step 10:** Using one headpin slide on one Bead art 5752 12mm Fern Green and make a simple loop. Repeat 5 more times and set aside.
- **Step 11:** Using one headpin slide on one Bead art 5752 8mm Peridot and make a simple loop. Repeat 35 more times and set aside.
- **Step 12:** Using one headpin slide on one Bead art 5752 12mm Peridot and make a simple loop. Repeat 5 more times and set aside.
- **Step 13:** Using one headpin slide on one Bead art 5752 8mm Sunflower and make a simple loop. Repeat 17 more times and set aside.
- **Step 14:** Using all charms made in Steps 7 – 13 randomly attach the entire length of the chain
- **Step 15:** Attach the toggle to each end of the chain to complete.

Lilac Showers

(April)

Designed by Susan Kazarian



Swarovski Elements:

PRODUCT GROUP	ARTICLE NO.	AMOUNT	SIZE	COLOR	COLOR CODE
Xilion Triangle Pendant	6628	32	8mm	Crystal Lilac Shadow	001 LISH
Bicone Bead	5328	44	4mm	Crystal Lilac Shadow	001 LISH

Supplies

9"	2mm small brass cable chain
6 pc	9-hole end bar TierraCast® 94-3170-27
2 pc	3-hole end bar TierraCast® 94-3168-27
1 pc	earring blank TierraCast® 90-5128-00
16 pc	small oval jump rings TierraCast® 01-0016-27
32 pc	medium oval jump rings TierraCast® 01-0018-27
8 pc	16g round jump rings TierraCast® 01-0020-27
6 pc	2" eye pins 21g TierraCast® 01-0027-27

Instructions

- **Step 1:** Slip on (1) bicone, Art. 5328 4mm Crystal Lilac Shadow onto (1) earring blank. Turn a simple loop. Add (1) small oval jump ring to the loop previous made. Repeat for second side. Set aside.
- **Step 2:** Using (1) eye pin, slip on (7) bicones, Art. 5328 4mm Crystal Lilac Shadow and turn a simple loop at the open end. Repeat 5 times more. Set aside.
- **Step 3:** Cut chain into 4 equal pieces approximately 2.25" long. Attach one small oval jump ring to one end of each of the 4 pieces. Attach one small oval jump ring to (1) piece of chain and to the outside hole of (1) 3-hole end bar. Repeat once. Using (1) small oval jump ring, attach it to the second outer hole of the 3-hole end bar and one of the two remaining chain pieces. Repeat once. Attach (1) medium oval jump ring to (1) Xilion Triangle Pendant, Art. 6628 8mm Crystal Lilac Shadow, and to the bottom large hole of the 3-hole end bar. Repeat once.
Note: you now have two chain components completed. Set aside.
- **Step 4:** Attach one medium oval jump ring to (1) Xilion Triangle Pendants, Art. 6628 8mm Crystal Lilac Shadow. Repeat 14 times more. Attach one triangle component just made to hole number 2, 3, 7, 8 on the 9-hole end bar. Repeat twice more.

Next, attach one triangle component to the large hole on the bottom of the 9-hole end bar. Use one 16g round jump ring and attach together two of the 9-hole end bar units using the outside holes. Attach the last 9-hole bar in the same manner. Note: you should now have the sides of the earring constructed.

- **Step 5:** Using the component made in step 2, attach one end to the large 16g jump ring connector. Repeat for the other two sides. Note: the crystal eye pins will be dangling free.
- **Step 6:** Using (1) large 16g jump ring, slip on in order, one crystal eye pin (from the side of the remaining loop), (1) piece of chain (from the small oval jump ring on the first chain component made in step 3), the second crystal eye pin (from the side of the remaining loop), (1) piece of chain (from the small oval jump ring on the second chain component made in step 3), the third crystal eye pin (from the side of the remaining loop), one earring wire made in step 1. Close ring.
- **Step 7:** Repeat steps 4 – 6 for the second side.

Flower Power

(May)

Designed by Susan Kazarian



Swarovski Elements:

PRODUCT GROUP	ARTICLE NO.	AMOUNT	SIZE	COLOR	COLOR CODE
BRACELET:					
Snap closure	1780/100	1	10mm	Crystal Metallic light gold	001 MLGLD
Molecule LO	3708	8	12.5x13.6mm	Fuchsia	502
Molecule LO	3708	16	8x8.7mm	Lt Turquoise	263
Xilion Lochrose	3128	60	3mm	Crystal Astral Pink	001 COP
Round Bead	5000	35	2mm	Fuchsia	502
Round Bead	5000	25	2mm	Jet	280
EARRING:					
Molecule LO	3708	4	12.5x13.6mm	Fuchsia	502
Molecule LO	3708	12	8x8.7mm	Lt Turquoise	263
Xilion Lochrose	3128	12	3mm	Crystal Astral Pink	001 COP
Xilion Lochrose	3128	4	4mm	Crystal Astral Pink	001 COP
Round Bead	5000	4	2mm	Jet	280
Round Bead	5000	12	2mm	Fuchsia	502
Bicone Bead	5128	2	4mm	Lt Turquoise	263

Supplies for bracelet

1	TierraCast® 21-0010-05
1 pc	½" x 10" leather strap – avocado
8 ft	6# Fireline thread
1 pc	size 10 beading needle
Tool:	Crystal applicator tool (www.jewelrythings.com)

Instructions for bracelet

- **Step 1:** Cut the leather strip to appropriate size. Sample is 7" in length.
- **Step 2:** Using the Crystal applicator tool and snap die set, attach the Lt. Metallic Gold snap to the end of the leather, making sure to position the top and the bottom of the snap correctly to the right/wrong side of the leather.
- **Step 3:** Thread a needle with the 6# fireline.
- **Step 4:** Sew on the crystals in any pattern you would like. The sample was done randomly. Note: Art. 3708 12.5x13.6mm Molecule in Fuchsia is capped with (1) Art. 3128 3mm Crystal Astral Pink and (1) Art. 5000 2mm Jet round bead, Art. 3708 8x8.7mm Molecule sew-on in Lt. Turquoise is capped with (1) Art. 3128 3mm Crystal Astral Pink and (1) Art. 5000 2mm Jet round bead.
- **Step 5:** After you sew on all of the Molecule sew-ons, fill in the leather strap with Art. 3128 3mm Crystal Astral Pink topped with (1) Art. 5000 2mm Fuchsia to your liking.

Flower Power

(May)

Designed by Susan Kazarian



Supplies for earring

2 pc	½" x 1.5" leather strap – avocado
2 pc	Strap Tip, Rock & Roll TierraCast® 94-3159-27
4 pr	4mm Compression Rivet TierraCast® 01-0060-27
4 pc	18g large, round jump ring TierraCast® 01-0026-18
24 pc	medium oval jump ring TierraCast® 01-0018-27
16 pc	1.5" 24g brass head pins
1 pc	earring blank TierraCast® 94-5128-00
2 pc	Hammertone oval TierraCast® 94-3088-27
Tool:	Rotary leather punch

Instructions for earring

- **Step 1:** Slip one Art. 5328 4mm bicone crystal in Lt. Turquoise onto one earring blank. Turn a simple loop. Repeat for second side. Set aside.
- **Step 2:** Using (1) piece of 1.5" leather, on one end slip into place the Strap Tip, mark the hole with a pen, remove the Strap Tip and using the rotary leather punch, punch a hole where it was marked. Slip the Strap Tip back in place and using (1) 4mm compression rivet, rivet the Strap Tip to the leather piece. Note: for instructions to rivet see www.tierracast.com
- **Step 3:** Fold the open end of leather through (1) Hammertone oval. While holding both leather pieces together, make a hole in the center with the rotary leather punch. Using (1) 4mm compression rivet, rivet the two sides of leather together. Note: see photo for placement.
- **Step 4:** Attach (1) large round jump ring to (1) Art. 3708 12.5x13.6mm Molecule sew-on in Fuschia.
- **Step 5:** Link (6) medium oval jump rings together. On the first, third and fifth ring, attach (1) Art. 3708 8x8.7mm Lt. Turquoise Molecule LO.
- **Step 6:** From the back of the crystal in step 4, attach the sixth ring from step 5. Note: make sure all the Molecule sew-on beads face the same direction.
- **Step 7:** Using (1) headpin slip on (1) Art. 5000 2mm Fuchsia round bead and (1) Art. 3128 3mm Crystal Astral Pink Xilion sew-on. Insert the headpin through the center hole of a Lt Turquoise Molecule sew-on. Nip the wire leaving an 8mm tail. Curl the tail back towards the hole. Note: This is done on the wrong side. Repeat 2 times more.
- **Step 8:** Using (1) headpin, slip on (1) Art. 5000 2mm Jet round bead and (1) Art. 3128 4mm Crystal Astral Pink Xilion sew-on. Make a small wire-wrapped loop. Repeat once more.
- **Step 9:** Onto the large round jump ring from step 4, slip on the component made in step 8.
- **Step 10:** Repeat step 4-9 once
- **Step 11:** Attach both large copper jump rings from the flower component to the hammertone oval making sure the Molecules face the same direction as the leather component.
- **Step 12:** Attach (1) earring wire from step 1 to the loop at the top of the Strap Tip, Rock & Roll.
- **Step 13:** Repeat steps 2-12 for the second side.

Here Comes The Bride (June)

Designed by Kim Paquette



Swarovski Elements:

PRODUCT GROUP	ARTICLE NO.	AMOUNT	SIZE	COLOR	COLOR CODE
Flat Back Hotfix	2808	18	6mm	Fuchsia	502
Flat Back Hotfix	2808	10	10mm	Crystal	001
Flat Back Hotfix	2808	5	6mm	Crystal	001

Note: Any Swarovski Hotfix Crystal shapes, colors and sizes can be used to compliment your wedding ensemble. Use a vintage crystal brooch to add "something old" to your ensemble.

Supplies

1	Fabric Covered Guest Book and Pen Set
1	Flower Girl Basket
1	Ring Bearer Pillow
1	Organza Favor Bags
1	Save the Date Cards
1	Single Hot Fix Stone Setting Tool

Note: A variety of fabric wedding accessories can be used to create your perfect wedding day look. Crystallize your veil, wedding gown, ribbons, place cards, invitations and more and make sure your day is the most sparkling day ever!

Instructions

- **Step 1:** Apply the selected hotfix stones to the chosen wedding accessories using the single hotfix stone setting tool. (See manufacturer's recommendations on packaging of tool.)
- **Step 2:** Check stone to ensure it has adhered to the fabric.
- **Step 3:** Allow articles to cool and set 24 hours before using

Firecracker Earrings

(July)

Designed by Tracy Gonzales of TierraCast®



Swarovski Elements:

PRODUCT GROUP	ARTICLE NO.	AMOUNT	SIZE	COLOR	COLOR CODE
Beads	5000	48	2mm	Crystal	001
Beads	5000	20	3mm	Crystal	001
Crystal Pearls	5810	4	8mm	Red Coral	001 718
Crystal Pearls	5810	4	8mm	Dark Lapis	001 719
Crystal Pearls	5810	2	8mm	White	001 650
Crystal Pearls	5810	2	4mm	Red Coral	001 718
Crystal Pearls	5810	2	4mm	Dark Lapis	001 719
Crystal Pearls	5810	2	4mm	White	001 650

Supplies

2	Sterling Silver 3mm Bead Ear wire, TierraCast® 90-1120-02
2	Ant. Pewter 3 Hole End Bar, TierraCast® 94-3168-40
6	Rhodium Open Star Charm, TierraCast® 94-2106-61
10	Ant. Silver 5mm Loop Spacer, TierraCast® 93-0437-12
12	Ant. Silver 3mm Beaded Spacer, TierraCast® 93-0418-12
6	Silver Med. Oval Jump ring, TierraCast® 01-0018-01
4	Silver Sm. Oval Jump ring, TierraCast® 01-0016-01
16	2" 24 gauge headpin, TierraCast® 01-0029-01
8"	22 gauge Silver Artistic Wire®

Firecracker Earrings

(July)

Designed by Tracy Gonzales of TierraCast®



Instructions

- **Step 1:** String one 4mm crystal pearl onto a headpin and form wrapped loop. Trim excess wire. Repeat with remaining 4mm crystal pearls.
- **Step 2:** String one 8mm crystal pearl onto a headpin. Begin wrapped loop, attaching to one 5mm Loop Spacer before completing. Trim excess wire. Repeat with remaining 8mm crystal pearls and loop spacers.
- **Step 3:** Cut one 4 ½" piece of craft wire. Curve wire into a circle around a 1" mandrel.
- **Step 4:** At one end of circle bend wire at right angle 1/2" from end. Use round nose pliers to form simple loop. Adjust loop perpendicular to the circle.
- **Step 5:** String twelve 2mm crystal beads.
- **Step 6:** String one 3mm spacer and one 3mm crystal bead. 2 times.
- **Step 7:** String one loop spacer with a red pearl and one 3mm crystal bead. Repeat with 4 more loop spacers in the following order: blue, white, blue, red.
- **Step 8:** String one 3mm spacer, one 3mm crystal bead, one 3mm spacer, one 3mm crystal bead and one 3mm spacer.
- **Step 9:** Repeat Step 5.
- **Step 10:** After stringing final bead repeat Step 4. (Trim wire to ½" if necessary.)
- **Step 11:** Open the simple loop at one end and attach to a 3 Hole End Bar. Repeat on other side. (You will have to spread this loop open in the "incorrect" fashion to accomplish this.)
- **Step 12:** Attach one sm. oval jump ring to one star charm. Before closing jump ring attach one white 4mm crystal pearl dangle. Attach second sm. oval jump ring to the first. Use one med. oval jump ring to attach this assembly to center hole of end bar.
- **Step 13:** Attach one med. oval jump ring to an end hole of the end bar. Before closing jump ring, attach one star charm and one red crystal pearl dangle.
- **Step 14:** Repeat Step 13 to attach one blue crystal pearl dangle to remaining hole of end bar.
- **Step 15:** Attach one ear wire to top loop of end bar.
- **Step 16:** Repeat Steps 3 through 15 for second earring.

Gatsby Inspired Necklace (August)

Designed by Meredith Roddy of Beadalon®



Swarovski Elements:

PRODUCT GROUP	ARTICLE NO.	AMOUNT	SIZE	COLOR	COLOR CODE
Beads	5000	45 pcs	8 mm	Aquamarine	202
Beads	5000	48 pcs	6 mm	Aquamarine	202

Supplies – Beadalon® Beading Wire (August)

1	JW11S-10FT 49 Strand Silver Color Beadalon® Beading Wire
12	349B-014 6mm Silver Plated Crimp Covers
12	JFCT2S-1.5G Size 2 Silver Plated Crimp Tubes
8	325B-002 Silver Plated Wire Guardians
1	312B-113 Head Pin
2	8mm Jump Rings
1	303W-249 Upper Clasp
1	1 Focal Filigree ower
Tools	<ul style="list-style-type: none"> • 216A-106 Bead Stopper • JTCRIMP1 Crimping Pliers • JTCRIMP3 Mighty Crimping Pliers • JTNIP1 Nipper

Gatsby Inspired Necklace

(August)

Designed by Meredith Roddy of Beadalon®



Instructions

- **Step 1:** Cut the Silver Color Beadalon® Beading Wire into the following lengths:
 - » (2) 10"
 - » (2) 6"
 - » (2) 5"
- **Step 2:** String a Wire Guardian with one 10" wire and attach it through one of the holes in the top of the ligree. String on a crimp tube, crimp and cover with a crimp cover.
- **Step 3:** String a Wire Guardian with one 5" wire and attach it to the next hole down on the edge of the ligree. String on a crimp tube, crimp and cover with a crimp cover.
- **Step 4:** String a Wire Guardian with one 6" wire and attach it to the next hole down on the edge of the ligree. String on a crimp tube, crimp and cover with a crimp cover.
- **Step 5:** Repeat steps 2-4 on the other side of the ligree. You will now have six wires attached to the ligree in the following order: longest, shortest, medium length.
- **Step 6:** String (21) 8mm 5000 Swarovski Beads, one crimp tube, and one more 8mm bead, onto the longest wire, and secure with a bead stopper.
- **Step 7:** String (9) 6mm 5000 Swarovski Beads and (1) crimp tube onto the middle wire. Loop the wire between the 5th and 6th bead on the longer wire. Crimp the crimp tube and cover with a crimp cover.
- **Step 8:** String (15) 6mm 5000 Swarovski Beads and (1) crimp tube onto the bottom, medium length wire. Loop the wire between the 7th and 8th bead on the longest wire. Crimp the crimp tube and cover with a crimp cover.
- **Step 9:** Repeat steps 6-8 on the other side.
- **Step 10:** Check your length, adding or subtracting beads as necessary. Attach your clasp with wire guardians. Thread your wire through the last beads and the crimp tube and crimp. Cover your crimps with crimp covers.
- **Step 11:** String the last 8mm 5000 Swarovski Beads bead onto the headpin. Poke the headpin through the middle of the ligree. Trim to ¼" and bend into one of the holes in the ligree to secure.

“Write” to Sparkle (September)

Designed by Kellie DeFries, Crystal Ninja.



Swarovski Elements:

PRODUCT GROUP	ARTICLE NO.	AMOUNT	SIZE	COLOR	COLOR CODE
Flat Back No Hotfix	2854	6	12mm	Crystal Red Magna	001(REDM)
Flat Back No Hotfix	2058	133	SS9	Hyacinth	236
Flat Back No Hotfix	2058	18	SS12	Fuchsia	502
Flat Back No Hotfix	2058	146	SS9	Aquamarine	202
Flat Back No Hotfix	2058	28	SS16	Crystal	001
Flat Back No Hotfix	2058	14	SS9	Sun	248
Flat Back No Hotfix	2058	14	SS9	Amethyst	204
Flat Back No Hotfix	2709	3	10x6mm	Crystal Golden Shadow	001(GSHA)
Flat Back No Hotfix	2709	5	10x6mm	Crystal Silver Shade	001 (SSHA)
Flat Back No Hotfix	2709	3	13x8m	Crystal AB	001(AB)

Note: A variety of Swarovski Hotfix Crystals in different sizes, shapes and colors can be used to add sparkle to your home, office and school stationary.

Supplies

1	Notebook
1	Note cards
1	2 part-epoxy glue
1	Craft sticks
1	Toothpicks
1	Small, disposable plastic or paper cups
1	Crystal Katana or wax stick
1	Acetone or nail polish remover
1	Cotton or Q-tips

Note: You can use any stationary items such as folders, binders, calendars, Thank You cards, invitations, and more to add a little sparkle to your every day work!

Instructions

- **Step 1:** Determine the crystal pattern you want to create on your stationary.
- **Step 2:** Mix the glue according to the manufacturer’s directions using the small plastic/paper cups and craft sticks.
- **Step 3:** Apply a small dot of glue on the stationary where you want to place your crystals.
- **Step 4:** Use the Crystal Katana or wax stick to pick up the crystals and place them on the glue.
- **Step 5:** Press down on the stone firmly, but gently.
- **Step 6:** Allow to dry 24 hours before using.
- **Step 7:** After the glue has cured for 24 hours, wipe the top of the crystals with the Acetone soaked cotton or Q-tips to remove any excess glue.

A Charming Halloween (October)

Designed by Ron Rock



Swarovski Elements:

PRODUCT GROUP	ARTICLE NO.	AMOUNT	SIZE	COLOR	COLOR CODE
Beads	5040	32 pcs	4mm	Jet	280
Beads	5040	4 pcs	6mm	Crystal Astral Pink	001 API
Beads	5328	8 pcs	6mm	Crystal Astral Pink	001 API
Beads	5051	4 pcs	8x6mm	Sunflower	292
Pendants	6039	2 pcs	25mm	Crystal Astral Pink	001 API
Pendants	6039	1 pc	38mm	Crystal Astral Pink	001 API

Supplies

22"	Brass Cable Chain 8x5mm TierraCast® 20-0625-13
12"	Brass Cable Chain 6x4mm TierraCast® 20-0425-13
16	2" head pins TierraCast® 01-0028-13
1	Watch toggle clasp TierraCast® 94-6164-13
1	Pumpkin Charm TierraCast® 94-2378-27
1	Witch Charm clasp TierraCast® 94-2379-27
1	Ghost Charm clasp TierraCast® 94-2377-27

Instructions

- **Step 1:** Using one headpin slide on one Bead art 5040 4mm jet, one Bead art 5328 6mm Crystal Astral Pink, and one Bead art 5040 4mm jet. Make a simple loop and set aside. Repeat 7 more times.
- **Step 2:** Using one headpin slide on one Bead art 5040 4mm jet, one Bead art 5040 6mm Crystal Astral Pink, and one Bead art 5040 4mm jet. Make a simple loop and set aside. Repeat 3 more times.
- **Step 3:** Using one headpin slide on one Bead art 5040 4mm jet, one Bead art 5051 8x6mm Sunflower, and one Bead art 5040 4mm jet. Make a simple loop and set aside. Repeat 3 more times.
- **Step 4:** Cut the 8x5 Cable chain into two 5" pieces and two 6" pieces. Set aside. Cut the 6x4 Cable chain into one 5" piece, one 4" piece and one 3" piece. Set aside
- **Step 5:** Using one 6" piece of 8x5 cable chain open chain at one end and slip this open end through one Pendant art 6039 38mm Crystal Astral Pink and link back into the chain capturing the pendant. Repeat with second piece of 6" cable chain. Using other end of chain open one link and slip through one Pendant art 6039 25mm Crystal Astral Pink and link back into the chain capturing the pendant. Repeat for second piece of 6" cable chain.
- **Step 6:** Using one 5" piece of 8x5 cable chain open chain at one end and slip this open end through other end of one Pendant art 6039 25mm Crystal Astral Pink and link back into the chain capturing the pendant. Repeat with second piece of 5" cable chain. Attach the Watch Toggle set to end of each chain.
- **Step 7:** Using one 5" piece of 6x4 cable chain open chain at one end and slip this open end through one Pendant art 6039 38mm Crystal Astral Pink and link back into the chain capturing the pendant. Repeat this step with the 4" and 3" pieces of 6x4 cable chain. Attach the Witch, Ghost and Pumpkin Charms at the ends of these pieces of chain.
- **Step 8:** Using the components made in Steps 1-3 attach randomly to the chains above the pendants. See photo for inspiration.

Pearl Harvest

(November)

Designed by Susan Kazarian



Swarovski Elements:

PRODUCT GROUP	ARTICLE NO.	AMOUNT	SIZE	COLOR	COLOR CODE
Cosmic Ring	4139	2	20mm	Crystal Red Magma	001 REDM
Crystal pearls	5810	2	4mm	Copper pearl	159
Crystal pearls	5810	4	6mm	Copper pearl	159
Crystal pearls	5810	8	6mm	Antique brass pearl	402
Crystal pearls	5810	4	6mm	Deep brown pearl	414
Crystal pearls	5821	4	11x8mm	Deep brown pearl	414
Cupchains & Findings	177719P16000	6	3-strand	Smoky Topaz	220
Cupchains & Findings	17704P2400A	4	PP24	Crystal Golden Shadow	001 GSHA

Supplies

1 pair	SS Earring blank TierraCast® 90-1120-00
5 inches	SS 2mm flattened cable chain
8 inches	SS 20g wire dead soft

Instructions

- **Step 1:** Slip (1) 4mm art. 5810 Crystal copper pearl onto (1) SS earring blank. Create a simple loop. Repeat for second side and set aside.
- **Step 2:** Cut 5 pieces of chain approximately $\frac{3}{4}$ " long. The chain should meet end-to-end around the Cosmic Ring Note: each piece has the exact loop count.
- **Step 3:** Take (1) piece of chain made in step 2 and wrap it around (1) art. 4139 20mm Crystal red magma cosmic ring. Open the loop on (1) earring blank made in step 1. Attach each end of chain to the earring blank loop, close loop. Repeat for second side and set aside.
- **Step 4:** Cut 20g wire into 4 equal pieces, 2" long. Set aside.
- **Step 5:** Using (1) piece of 2" wire, make a simple loop. Next, slip on (1) art. 5810 6mm Deep brown pearl, (1) 3-strand crystal spacer using an outside hole, (1) art. 5810 6mm Antique brass pearl, (1) 3-strand crystal spacer using an outside hole, (1) art. 5810 6mm Antique brass pearl, (1) 3-strand crystal spacer using an outside hole, (1) art. 5810 6mm Copper pearl and finish with a simple loop. Note: create all loops to match in size.
- **Step 6:** Repeat step 5 using the opposite outer hole for each of the 3-strand spacer bars. Note: the center hole of each of the 3-strand spacer bars will not be used.
- **Step 7:** Using (1) piece of chain made in step 2, wrap around the Cosmic ring made in step 3. Note: the chain should lie opposite the earring finding. Open the simple loop nearest the copper pearl and slip on both ends of chain. Close loop. Note: make sure the earring component is facing in the correct direction to the earwire.
- **Step 8:** Repeat step 7 for the opposite side of the earring component made in step 5.
- **Step 9:** Using (1) crystal headpin, create a loop and attach to a loop made closest to the 6mm Deep brown pearl. Repeat this step once, for its second dangle. Note: the earrings shown were created with wire wrap dangles.
- **Step 10:** Repeat steps 3 – 9 for the remaining earring pair.

Christmas in Siam

(December)

Designed by Susan Kazarian



Swarovski Elements:

PRODUCT GROUP	ARTICLE NO.	AMOUNT	SIZE	COLOR	COLOR CODE
Filigrees	62019	5		Siam, It Siam, Siam	208,227,208
Pendants	6628	13	8mm	Dark Moss Green	260
Cupchain & findings	4328	3	13x7.8mm	Siam	208
Cupchain & Findings	4328	2	10x6mm	Siam	208
Mini oval beads	5051	14	10x8mm	Siam	208
Cabochette bead	5026	14	6mm	Siam	208
Bicone bead	5328	2	4mm	Dark Moss Green	260
Button	1811/100	2	12mm	Siam	208

Supplies

1 pair	SS earring blank TierraCast® 90-1120-00
3 pc	1.25" Radiant ring TierraCast® 94-3112-61
9 pc	Medium hammertone ring TierraCast® 94-3086-61
7"	9x6mm Embossed cable chain TierraCast® 20-0325-63
1 pc	Large quatrefoil TierraCast® 94-3141-61
5 pc	Oval jump rings TierraCast® 01-0018-01
15 pc	Round jump rings TierraCast® 01-0025-01
4 pc	SS crimp beads TierraCast® 01-0030-01
4 pc	SS 3mm crimp bead covers TierraCast® 01-0032-01
16"	0.015 Beadalon® beading wire

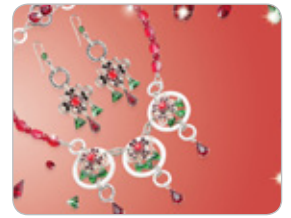
Instructions for earring

- **Step 1:** Open 6 round jump rings. Remove two links off of the 9x6mm Embossed cable chain. Set aside.
- **Step 2:** Slip on (1) art. 5328 4mm Dk moss green bicone onto (1) earring blank and turn a simple loop. Repeat for the second piece. Set aside.
- **Step 3:** Using (1) round jump ring, attach (1) art. 4328 10x6mm Siam tear drop pendant to the center loop on the long side of the Filigree. Using (1) jump ring each, attach (2) art. 6628 8mm Xillion triangle in Dk. Moss green to the outside loops on the long side of the filigree. Note: One Xillion triangle should be on the left and on the right of the Siam pear drop.
- **Step 4:** Attach (1) oval jump ring to (1) medium hammertone ring, before closing the jump ring, attach the unit to the top of the filigree. Note: the location is exactly opposite that of the space holding the Siam pear drop.
- **Step 5:** Attach (1) link from the 9x6mm Embossed cable chain to the medium hammertone ring from step 4. Next, slip on one earring blank made in step 2 and close the link.
- **Step 6:** Repeat steps 3-5 for the second earring.

Christmas in Siam

(December)

Designed by Susan Kazarian



Instructions for necklace

- **Step 1:** Using the round jump rings, attach three art 6628 Xilion triangles in Dk. Moss green to the bottom three loops on the long side of the filigree piece. Repeat this step twice more. Set aside.
- **Step 2:** Open and remove each link on the 9x6mm Embossed cable chain. Note: you should have a minimum of 24 pieces. Set aside
- **Step 3:** Using (1) oval jump ring, attach (1) art. 4328 13x7.8mm Siam pendant to (1) medium hammertone ring. Repeat twice more. Set aside.
- **Step 4:** Using (1) chain link from step 2, slip into the top left loop on the filigree piece and attach the link to (1) 1.25" Radiant ring. Repeat this step for the right side. Note: if necessary, refer to the photo for placement.
- **Step 5:** Repeat step 4 for the remaining two filigree pieces.
- **Step 6:** Using (1) filigree component made in step 4, open the left chain link and attach to (1) medium hammertone ring.
- **Step 7:** Using (1) chain link from step 1, attach to the right chain link of the filigree component from step 6. Repeat this step with a second chain link. Note: both links on the right should sit side by side.
- **Step 8:** Using the second filigree component made in step 5, open the left chain link and attach to the double links created in step 7 on the first filigree component. Note: if necessary, refer to the photo for placement.
- **Step 9:** Using (1) chain link from step 1, attach to the right chain link of the second filigree component from step 8. Repeat this step with a second chain link. Note: both links on the right should sit side by side.
- **Step 10:** Using the third filigree component made in step 5, open the left chain link and attach to the double links on the second filigree component. Note: If necessary, refer to the photo for placement.
- **Step 11:** Open the right chain link of the third filigree component and attach it to (1) medium hammertone ring.
- **Step 12:** Attach (1) chain link, from step 1 to the left medium hammertone link and attach (1) chain link, from step 1, to the right medium hammertone link.
- **Step 13:** Using the drop component made in step 3, attach (1) chain link to the medium hammertone link and to the bottom of Radiant ring on the first filigree component. Attach one more chain link between the medium hammertone ring and the Radiant ring. Note: the chain links should sit side by side. Make sure the tear drop is facing the right way. Repeat this step for the middle and right filigree components.
- **Step 14:** Attach (1) chain link from step 2 to (1) button Art. 1811/100 Siam. Attach a second chain link to the first chain link and to (1) medium hammertone ring. Attach (1) more chain link to the medium hammertone link. Repeat this step once more. Note: the two components made are for the closure of the necklace. Set aside.
- **Step 15:** Cut the 16" beading wire in half.
- **Step 16:** Crimp one beading wire to the left chain link from step 12. Attach crimp cover. Repeat this step using the second beading wire to the right chain link from step 12. Attach crimp cover.
- **Step 17:** Beginning with one side, slip onto the beading wire (1) Art. 5051 10x8mm Mini oval bead in Siam and (1) Art. 5026 6mm Cabochette bead in Siam. Repeat this pattern 6 times more. Crimp the wire to the loose chain link on one component made in step 14. Note: do not attach the wire to the button side. Refer to the photo for placement if necessary.
- **Step 18:** Repeat step 17 for the opposite side of the necklace.
- **Step 19:** Clasp the necklace: Insert one side of the necklace from the button into the Quatrefoil link. It will naturally want to sit in one of the curves. Pull it up a bit and out of the way and bring the second side of the necklace from the button into the Quatrefoil link. Both buttons should sit into the opposite side curves. While wearing the necklace, the closure will not come undone. But be careful taking it off, as the Quatrefoil link is not attached to the necklace and you don't want to lose it.