

CREATE
YOUR STYLE
with SWAROVSKI ELEMENTS

“POWERFUL AND PASSIONATE. A MUST SEE YOUTUBE SERIES”

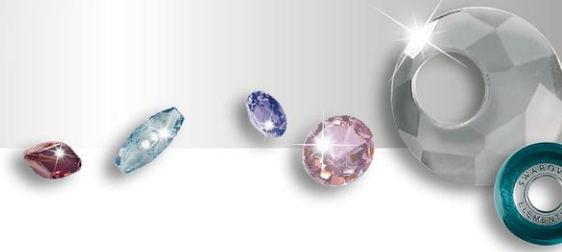


THE PROFESSOR OF CRYSTAL

A SWAROVSKI ELEMENTS ONLINE TV SERIES
A CREATE YOUR STYLE PRODUCTION
NICK REGINE IS THE PROFESSOR OF CRYSTAL



Ceralun™
Ceramic Epoxy Composite



Ceralun™ EXPLORING NEW DESIGN DIMENSIONS

Basic Information

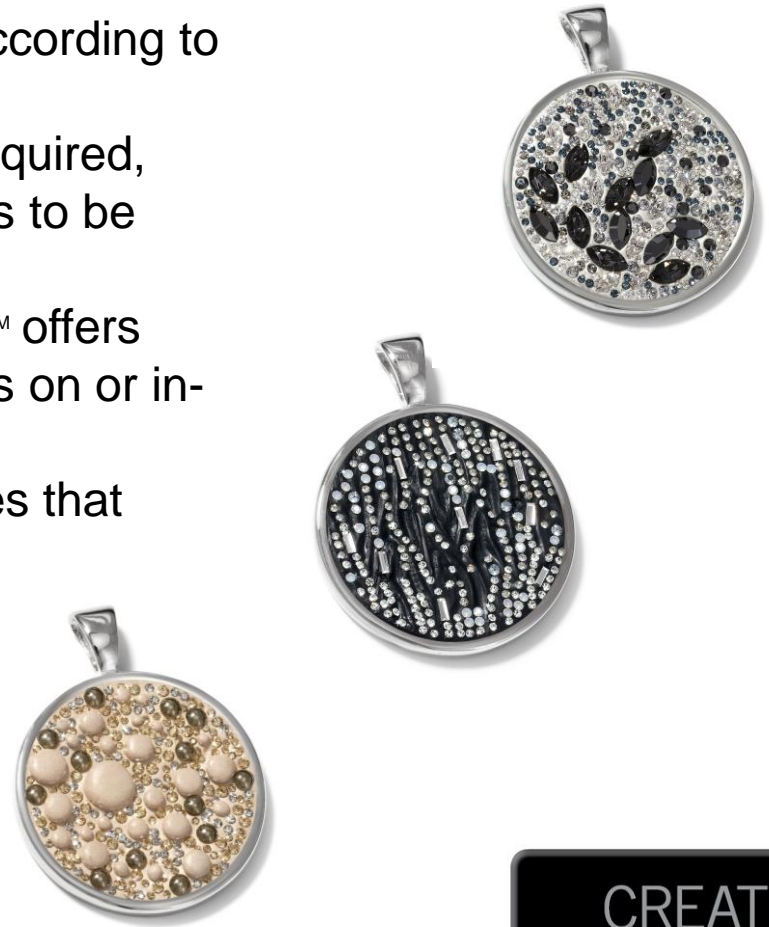
- Ceralun™ is a versatile and powerful two-component, high-performance ceramic epoxy composite, which has been especially developed for the application of Swarovski crystals.
- Ceralun™ has optimal adhesive characteristics for applications on metal, glass, crystal, glue able plastic surfaces, rubber, wood, cork, and porcelain.
- In addition, the mirrored surface of the crystal is protected against mechanical stress.



Ceralun™ EXPLORING NEW DESIGN DIMENSIONS

Basic Information

- With Ceralun™, crystals can be embedded according to virtually any design concept imaginable.
- As no minimum space between crystals is required, Ceralun™ allows maximum amount of crystals to be applied as closely as desired.
- With a structured surface treatment Ceralun™ offers multiple design opportunities to apply crystals on or in-line with the patterning.
- Ceralun™ can be used to create 3D structures that maximize the impact of the applied crystals.





Ceralun™ EXPLORING NEW DESIGN DIMENSIONS

SWAROVSKI ELEMENTS used with Ceralun™

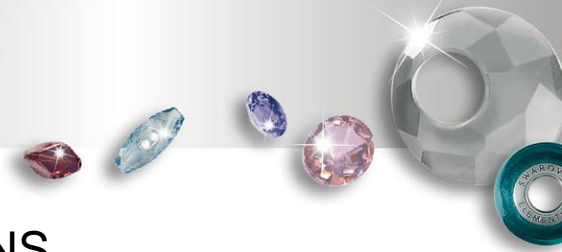
- Swarovski Chatons and Fancy Stones are most commonly used with Ceralun™
- Other SWAROVSKI ELEMENTS products that can also be used to creatively design attractive jewelry & accessories are:
 - Beads
 - Pendants
 - Crystal Mesh
 - Crystal Cupchain & Findings



Ceralun™ EXPLORING NEW DESIGN DIMENSIONS

Application

- The surface to be glued must comply with the general requirements for gluing
 - It must be clean, dry, and free of oil and grease.
- Before processing we recommend measuring the tension of the surface to be glued with a Test Pen
 - Test Pen is available from Swarovski, Art. 9030/000.
 - A surface tension of at least 38mN/m is recommended for gluing.
 - During the processing of Ceralun™ always wear protective gloves & eye protection.
- Weigh the required amount of component A and component B (mixing ratio 1:1).
- Thoroughly mix the two components until a homogenous appearance is achieved.
- Place and press Ceralun™ on the relevant area and set the crystals using a pair of tweezers, beeswax stick or a vacuum pick-up system.
- Hardening time and final adhesion strength are dependent on the temperature.
 - Hardening time can be accelerated through heat (to a max. of 80°C/176°F).
 - Total hardening time at room temperature (23°C/73.4°F) is 72 hours.
 - Time required before handling strength is reached at room temperature (23°C/73.4°F) is 12 hours.



Ceralun™ EXPLORING NEW DESIGN DIMENSIONS

Storage Conditions

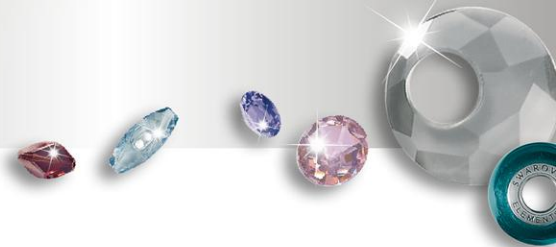
- Ceralun™ may be stored for up to 12 months at 15-25°C/59-77°F.
- Store product in cool and dry conditions.
- Note: When processing Swarovski crystals please take careful note of the detailed instructions and the directions for achieving the highest possible quality as stated on www.swarovski-elements.com/ceralun.
 - This website also includes the relevant safety data sheets and further information.



Ceralun™ EXPLORING NEW DESIGN DIMENSIONS

Design Ideas





For questions and comments, please
email us at:

professorofcrystal@swarovski.com